



# EVENT CODE: BestDayEver

Go to [shpeuf.com](https://shpeuf.com) or use the SHPE UF Mobile App

Go to Points Program → Redeem Code



# GENERAL BODY MEETING #1

**Society of Hispanic Professional Engineers**  
**August 28th, 2025**



# GUEST SPEAKERS

Gamma Eta Sorority, Inc. presents...

# Sunkissed DREAMS

Fall Recruitment 2025



# Recruitment events

8/29 | 6:30pm

*Dreamy  
Sparkis*

Speed Dating

9/02 | 6:30pm

*Charmed  
Threads*

Bracelet making  
& Philanthropy

9/04 | 6:30pm

*Golden  
Finds*

Thrift with Sisters

9/05 | 6:30pm

*Radiant  
Rhythms*

Dance Social

9/08 | 6:30pm

*Dream  
Teams*

Game Night Social

# Calling All Majors!

**Join us at our recruitment events:**

Fri. 8/29: Lunch in Plaza @ 11am - 12:30pm

Thurs. 9/04: Open GBM @ 6-7pm, Weil 270

Fri. 9/05: Lunch in Plaza @ 11am - 12:30pm

Fri. 9/12: Lunch in Plaza @ 11am - 12:30pm

**Become involved in designing sustainable solutions to help communities meet their basic human needs!**

Communications

Public Relations

Website Design

Design

Fundraising

**Applications due Friday, Sept. 12th at 11:59 PM!**



ENGINEERS WITHOUT BORDERS USA  
University of Florida Chapter



Instagram



Application

# AGENDA



What is SHPE?



Meet the Team



Announcements



Upcoming Events



**WHAT IS SHPE?**

# SOCIETY OF HISPANIC PROFESSIONAL ENGINEERS

## Mission:

- SHPE changes lives by empowering the Hispanic community to realize its fullest potential and to impact the world through STEM awareness, access, support and development.

## Vision:

- SHPE's vision is a world where Hispanics are highly valued and influential as the leading innovators, scientists, mathematicians and engineers

## EVERYTHING ORGANIZATION

- Professionalism
- Familia Community
- Leadership Opportunities
- First Year Development
- Graduate & Research Resources
- Technical Experience
- K-12 Outreach
- Academic Resources
- Financial Literacy



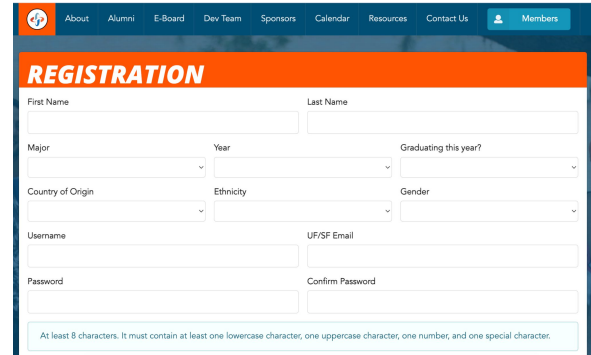
# MEMBERSHIP

## SHPE UF Membership:

- Visit [shpeuf.com](https://shpeuf.com)
- Free to sign up and make a profile
- Access to points program and internal resources

## SHPE National Membership:

- Visit [shpeconnect.org](https://shpeconnect.org)
- \$10 Undergraduate Membership fee
- You must be a national member to:
  - Apply for director positions & programs
  - Attend National Convention
- Access to SHPE National scholarships and resources



The screenshot shows a web registration form titled "REGISTRATION". The form includes fields for First Name, Last Name, Major, Year, Graduating this year?, Country of Origin, Ethnicity, Gender, Username, UF/SF Email, Password, and Confirm Password. A note at the bottom states: "At least 8 characters. It must contain at least one lowercase character, one uppercase character, one number, and one special character."



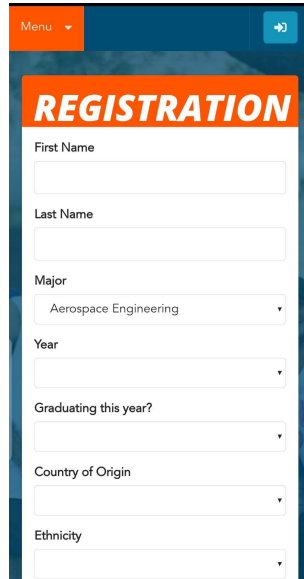
The screenshot shows the SHPE National "Sign In or Create an Account" page. It features the SHPE logo and the tagline "Leading Hispanics in STEM". The page has two main sections: "Not a Registered User Yet?" and "Login". The "Not a Registered User Yet?" section includes a "Go" button and a note: "If you are a visitor and do not already have a username and login, please enter your email below." The "Login" section includes fields for "Email Address" and "Password", a "Remember Me" checkbox, a "Forgot Your Password?" link, and a "Login" button.

# SHPEUF.COM



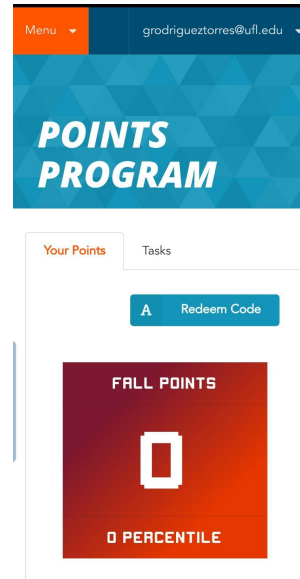
1

Homepage



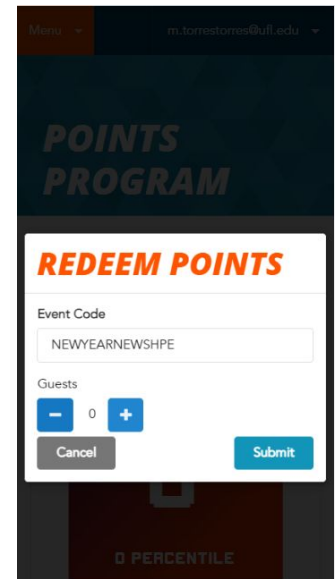
2

Registration



3

Points Rewards



4

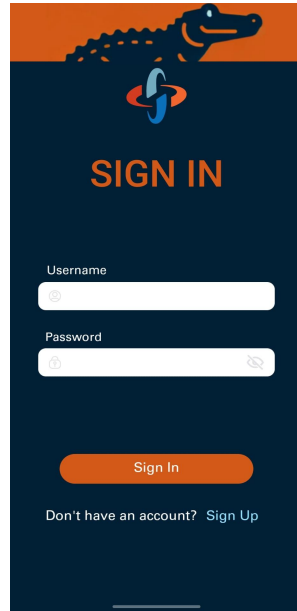
Enter Code

# MOBILE APP



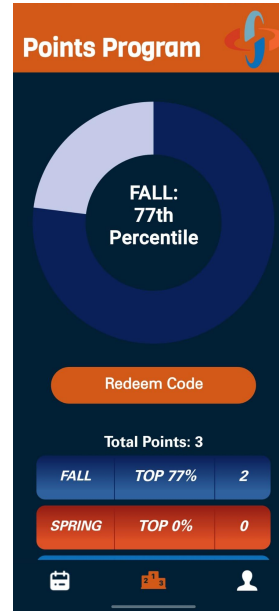
1

Homepage



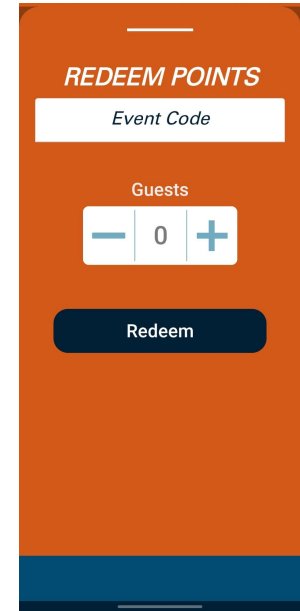
2

Registration



3

Points Rewards



4

Enter Code

# STAY UP TO DATE

## Google Calendar

- Includes all SHPE UF events and can be easily added to your own Google Calendar
- Each event will include all necessary information for you to be in the know

## Instagram


- @shpeuf
- Weekly posts with all info for the week

## WhatsApp Community

- Reminders, quick announcements, updates, and all SHPE-related chats

● Fall GBM 1  
Thursday, August 29 · 6:15 – 7:30pm

 [Invite via link](#)

 TUR L007

 **In-Person Location:** Turlington Hall L007  
**Zoom Link:** <https://ufl.zoom.us/j/99836320537>

 30 minutes before

 SHPE UF Master Calendar



2025-26




**FALL GBM #1**  
Intro Video

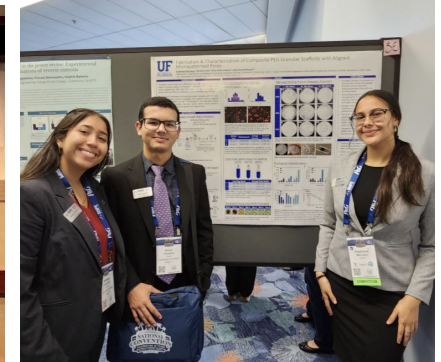


# MEET THE TEAM

# VP RESEARCH

## Stephanie Manrique (she/her)

- Major: Biosystems Engineering
- Year: 4th Year
- Origin: Bogotá, Colombia 
- SHPE Experience
  - FA23 MentorSHPE Mentee
  - SP24 Graduate Outreach Director
  - SU24 Event Director
  - 23-24 Research Team Chair
  - SP25 MentorSHPE Mentor
- Professional Experience
  - Pharmacodynamics Research Assistant at UF
  - Chemical Engineering Research Assistant at UF
  - Biomedical Engineering Research Assistant at UF
  - Pre-Market Quality Engineer Intern @Medtronic
- Fun Fact:
  - I am a world class indoor percussion performer and a published research author



# SECRETARY


Andrea Avila (she/her)

- Major: Industrial & Systems Engineering
- Year: 3rd Year
- Origin: Caracas, Venezuela 
- SHPE Experience
  - SP25 SHPEducation Director
  - FA24 Apparel Director
  - FA24-25 Alumni Director
  - SU24 Content Director
  - SP24 Mentee
  - FYLP Class of Spring 2024
- Professional Experience
  - STANDOUT Participant @ P&G
- Fun Fact:
  - I danced flamenco for 9 years



# TREASURER

## Carolina Abad (she/her)

- Major: Computer Science
- Year: 3rd year
- Origin: Las Palmas de Gran Canaria, España 
- SHPE Experience
  - FA24-25 FinanceSHPE Director
  - FA24-25 Yearbook Director
  - FA24-25 SHPE Jr. P.K.Y Representative
  - SU24 SHPEducation Director
  - FYLP Class of Spring 2024
- Professional Experience
  - Software Engineering Intern @ Lockheed Martin Aeronautics
  - Investment Analyst Intern @ PS27 Ventures
  - Venture Capital Extern @ TampaBay.Ventures
  - Cybersecurity Intern @ Catenactio
- Fun Fact:
  - I'm a double black belt in Karate and Brazilian Jui-Jitsu!



# VP MARKETING

## Tatiana Escobar (she/her)

- Major: Civil Engineering
- Year: 4th Year
- Origin: Miami, Florida | Cuba 
- SHPE Experience
  - SP25 FYLP Director
  - FA24 Apparel Director
  - 24-25 SHPEducation Civil Engineering Advisor
  - SU24 Recruitment Director
  - SP24 Social Media Director
  - FA23 Apparel Director
  - SU23 Graphic Design Director
  - MentorSHPE Mentor x3
  - FYLP Class of Fall 2022
- Professional Experience
  - Project Engineer Intern @ Turner
  - Field Engineer Intern @ Turner
- Fun Fact:
  - I am a Raww SUPER FAN & I have about 50 vinyls in my record collection



# VP CORPORATE

## Diego Rey (he/him)

- Major: Structural Eng. (M.E)/ Civil Eng. (B.S) F 2024
- Year: Master's Student
- Origin: Barranquilla, Colombia 
- SHPE Experience
  - SP25 Corporate Liaison
  - 24-25 Lead BBQ with Industry Director
  - FA 22 Apparel Director
  - 23-24 SHPEducation Civil Engineering Advisor
  - FYLP Class of Spring 2022
  - Mentor/ Mentee
- Professional Experience
  - E.I licensed
  - Bridges, Structures & Offshore Intern @ Arup
  - Structural Engineering Intern @ H&H
  - Structural Engineering Staff @ GSE
  - Lab Technician @ GSE
- Fun Fact:
  - My spotify wrapped reached over 100k minutes



# VP TECHNOLOGY

## Jorge Ramirez (he/him)

- Major: Computer Engineering
- Year: 4th Year
- Origin: Ciego de Avila, Cuba 
- SHPE Experience
  - 24-25 Technology Lead
  - 23-24 Software Engineering Director
  - SHPEducation Tutor & CpE Advisor
  - MentorSHPE Mentor x3
  - FLYP Class of Spring 2023
  - Summer 2023 Recruitment Director
- Professional Experience
  - Summer 2025 Lockheed Martin Intern
  - Summer 2024 Northrop Grumman Intern
  - Microprocessors Applications Teaching Assistant
- Fun Fact:
  - I recently got back into playing the Yu-Gi-Oh TCG



# VP EXTERNAL

Vivian Rincon Dib (she/her)

- Major: Computer Science
- Year: 3rd Year
- Origin: Maracaibo, Venezuela 
- SHPE Experience
  - SP25 Lead Community Outreach Director
  - SP25 MentorSHPE Mentor
  - SP23 - SP25 iOS App Director
  - FA24 Lead Content Director
  - SP24 GFT Marketing Director
  - FYLP Class of Fall 2024
- Professional Experience
  - Systems R&D SWE Intern @ NI/Emerson
  - SWE Intern @ FCI
  - SWE Intern @ Docures
- Fun Fact:
  - I was a ball kid for 2 tennis championships in Abu Dhabi!



# VP INTERNAL

Grace Ramirez (she/her)

- Major: Mechanical Engineering
- Year: 3rd year
- Origin: Miami, FL | Cuba & Colombia 
- SHPE Experience
  - SP25 GFT Lead Director
  - SP25 FYLP Director
  - SP25 MentorSHPE Mentor
  - FA24 Lead Event Director
  - SP24 GFT Event Director
  - 23-24 Yearbook Director
  - FA23 FYLP Class
- Professional Experience
  - Manufacturing Engineering Intern @P&G
- Fun Fact:
  - I have been to Disney more times than I have been on a plane!



# PRESIDENT

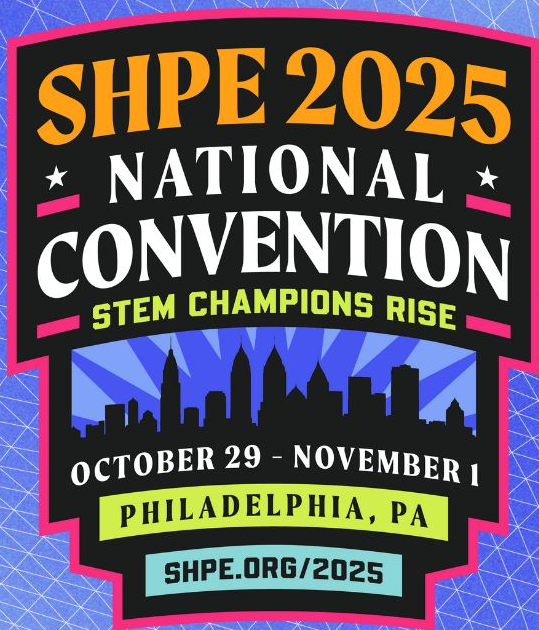
## Sebastian Sobrino (he/him)

- Major: Mechanical Engineering
- Year: 4th year
- Origin: Gurabo, Puerto Rico 
- SHPE Experience
  - 24-25 VP External
  - SP24 GFT Lead
  - SP24 and SP25 XEC Winner
  - FA23 MentorSHPE Director
  - SP23 GFT Corporate Director
  - FYLP Class of Fall 2022
- Professional Experience
  - Manufacturing Engineering Intern @ P&G
  - 2x Product Engineering Intern @ John Deere
  - Manufacturing Engineering Intern @ Caterpillar
  - Engineering Intern @ J.O.G. Engineering
- Fun Fact:
  - I visited 8 national parks and hiked 124 miles this summer!





# ANNOUNCEMENTS



# SHPE 2025 National Convention

Wednesday October 29<sup>th</sup> - November 1<sup>st</sup>  
Philadelphia Convention Center - Philadelphia, Pennsylvania  
Early Bird Pricing Ends September 15th



University of  
Florida

# CONVENTION

**When:** Wednesday, October 29th - Sunday, November 1st

**Where:** Philadelphia, Pennsylvania

**How Much:** \$345 Registration (Until September 15th)

## What is it?

- SHPE National Convention is the largest gathering of Hispanics in STEM every year with 15,000 attendees
- Every company you could think of is in attendance to interview amazing candidates like YOU for internship and full-time positions
- Educational workshops, competitions, networking events, the popular Career Fair & Graduate School Expo

**EARLY BIRD REGISTRATION ENDS SEPTEMBER 15TH**



# CONVENTION

## How will SHPE-UF help me prepare/attend?

- **SHPE Bootcamp:** Resume Workshops, Interview Prep, Professionalism Workshops, and more!
- **Registration reimbursement:** for our most involved members, based on SHPE Points for Spring '25 and Fall '25!
- **Housing/Travel:** SHPE UF hotel block, flight and lodging recommendations

## Additional Information

- SHPE National & SHPE Region 7 are offering need-based assistance
- We will host a Convention Info Session (in a few slides)
  - Access everything through out National Convention Linktree!





# Fall Director Applications

- ↻ 8 Cabinets
- ↻ 90+ Positions Available
- ↻ Applications are open until September 4<sup>th</sup> 11:59 PM

# DIRECTORS

# INFORMATION

- Open to all years
- No previous experience is required for these roles
- You can apply to multiple positions, we will ensure you do not get overloaded
- Apps are due on September 5th at 11:59 PM!

## **Important Save The Date:**

LeaderSHPE Workshop

When: Sunday, September 14th

Time: 11:00 AM – 2:00 PM

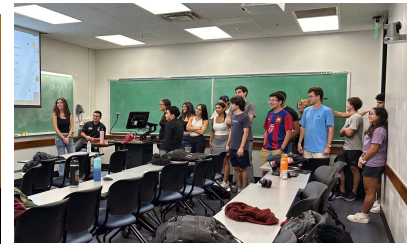
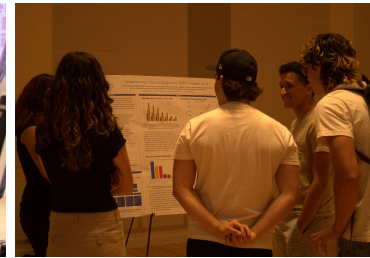
Location: Reitz Union

Attendance is **MANDATORY** for all accepted directors!

# RESEARCH

Director Positions Available...

- Director of Data Analysis & Insights (1-2)
- Director of ERS Promotion (1-2)
- Director of Graduate Outreach (1)
- Graduate Liaison (1-2)
- Director of Research Outreach (1)
- Director of Research Lab Experiences (1)
- Director of ERS Event Planning (1-2)
- Director of ERS Operations & Logistics (1)



# SECRETARY

Director Positions Available...

- Hangouts Director (2)
- Yearbook Director (4-5)
- SHPEducation Director (2)
- SHPEducation Advisors
- SHPEducation Tutors



# TREASURY

Director Positions Available...

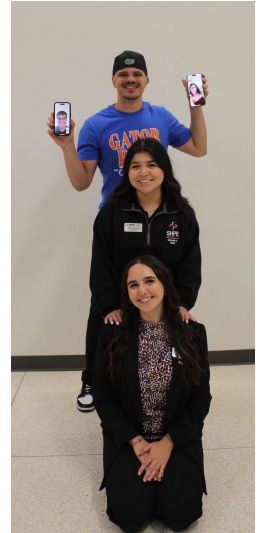
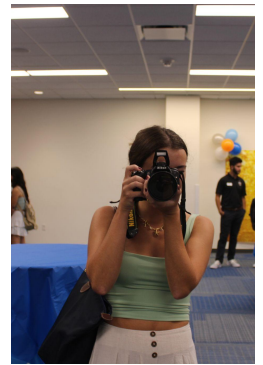
- Budget Director (2-3)
- FinanceSHPE Director (2)
- GBM Director (1)
- Opportunities Database Director (1-2)
- SHPE Capital Portfolio Manager (2-3)
- SHPE Tank Director (2-3)



# MARKETING

Director Positions Available...

- Social Media (5-6)
- Graphic Design (4-5)
- Content (3-4)
- Recruitment (2-3)
- Photography (2-3)
- Videography (1-2)
- Apparel (2-3)



# CORPORATE

Director Positions Available...

- Info-Session Directors (3)
- Project Manager Director (5-6)



# EXTERNAL

## Director Positions Available...

- SHPE Jr. Conference Directors (3)
- SHPE Jr. Rep to Cypress Bay HS (1)
- SHPE Jr. Rep to Hialeah Gardens HS (1)
- SHPE Jr. Rep to P.K.Y. HS (1)
- SHPE Jr. Rep to Somerset Academy HS (1)
- SHPE Jr. Rep to NCF Charter School (1)
- New Chapter Development Director (1)
- SHPE Jr. Jr. Rep Elementary/Middle (2)
- Outreach Directors (2)



# INTERNAL

Director Positions Available...

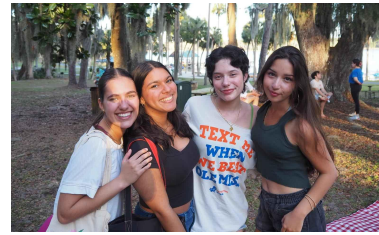
- New Member Experience Director (2)
- SHPEtina Ambassador (3)
- Event Director (4)
- Athletics Director (4)



# TECHNOLOGY

## Director Positions Available...

- Code for Change Corporate Director (1)
- Code for Change Marketing Director (1)
- Code for Change Event Director (1)
- Software Developer Director (3-4)
- IOS Mobile App Developer Director (3-4)
- Android Mobile App Developer Director (3-4)
- UI/UX director (3-4)
- SHPEWorks Director (2)





# MENTORSHPE

## What is MentorSHPE?

MentorSHPE is a program where **mentees** are matched with a **mentor** that can offer advice in professional, academic, or even daily-life aspects! It is a great way to get involved and form new friendships!

## Important Dates

- Mentor Apps Open: Now!
- Mentor Apps Due: September 2nd
- Matchmaking Event: September 4th
- Mentee Apps Open: September 4th
- Mentee Apps Due: September 12th





# MENTOR APPLICATIONS RELEASE

**MENTOR APPS  
OPEN: THURSDAY, AUGUST 28TH  
CLOSE: TUESDAY, SEPTEMBER 2ND @ 11:59 PM**



# **MENTEE APPLICATIONS RELEASE**

**MENTEE APPS  
OPEN: THURSDAY, SEPTEMBER 4TH  
CLOSE: FRIDAY, SEPTEMBER 12TH @ 11:59 PM**

# First Year Leadership Program (FYLP)

Applications are due **September 3<sup>rd</sup>, 2025 at 11:59 PM.**

If you are a **freshman or first-year transfer student,**  
you are eligible to apply!



# FYLP

Interested in **SHPE's First Year Leadership Program?**

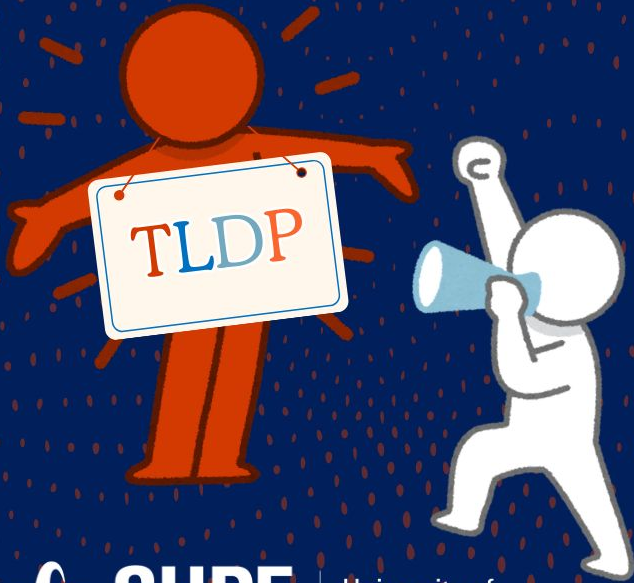
FYLP is a program that aims to help 1st year students get acclimated to UF while also providing them the necessary tools to become a successful leader. All this via:

- Leadership development workshops
- Providing info on SHPE & UF resources
- Displaying how to get involved on campus
- Socials + Mentoring

**Due: September 3rd at 11:59pm**



# Technology Leadership & Development Program



Introduce students with less technical experience to various fields in technology through workshops, projects, and additional support  
Applications due September 4th!

The background of the entire image is a dark blue color with a pattern of orange and white circuit board traces. These traces are interconnected lines of varying thicknesses, some ending in small circles, resembling a complex electronic circuit. The pattern is dense and covers the entire frame.

# SHPE DESIGN TEAM

Applications open until  
September 4th!

# SHPE UF DESIGN TEAM

## What is the Design Team?

- Year-long Project
- Open to all levels of experience



## What is this year's project?

- Autonomous Vehicle Team
  - Implementing key robotics concepts like 3D modeling, circuits, and software development
  - Testing vehicles on diverse terrains and obstacles
  - AI & Machine Learning implementation

**Applications Due: September 4th at 11:59pm**

# RESEARCH TEAM

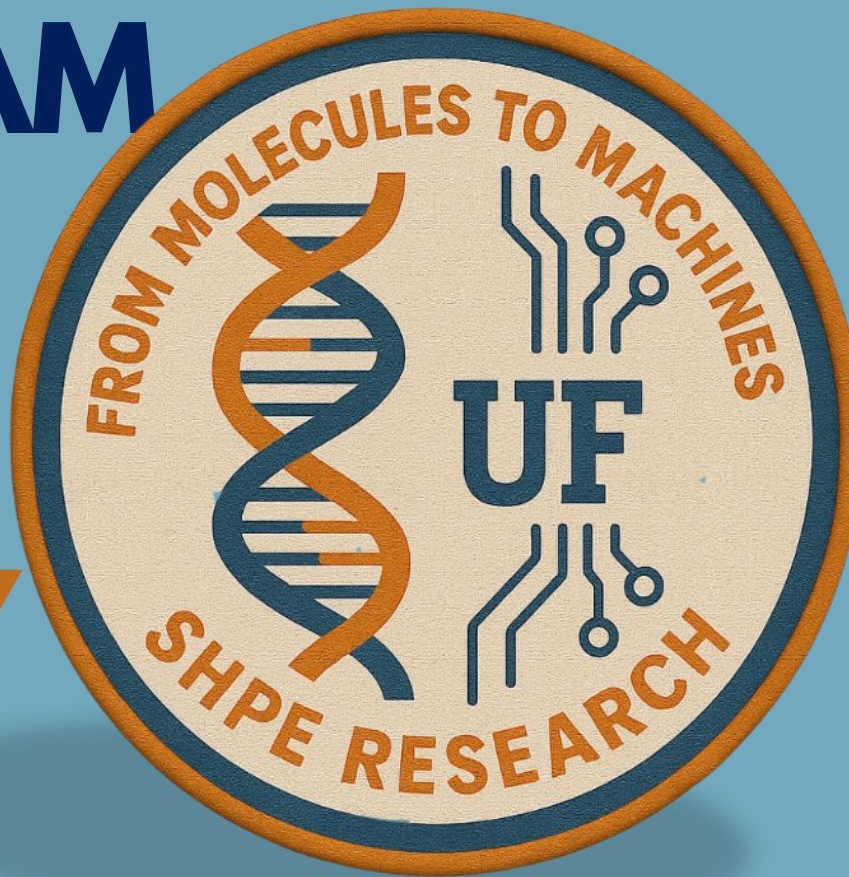
## Applications

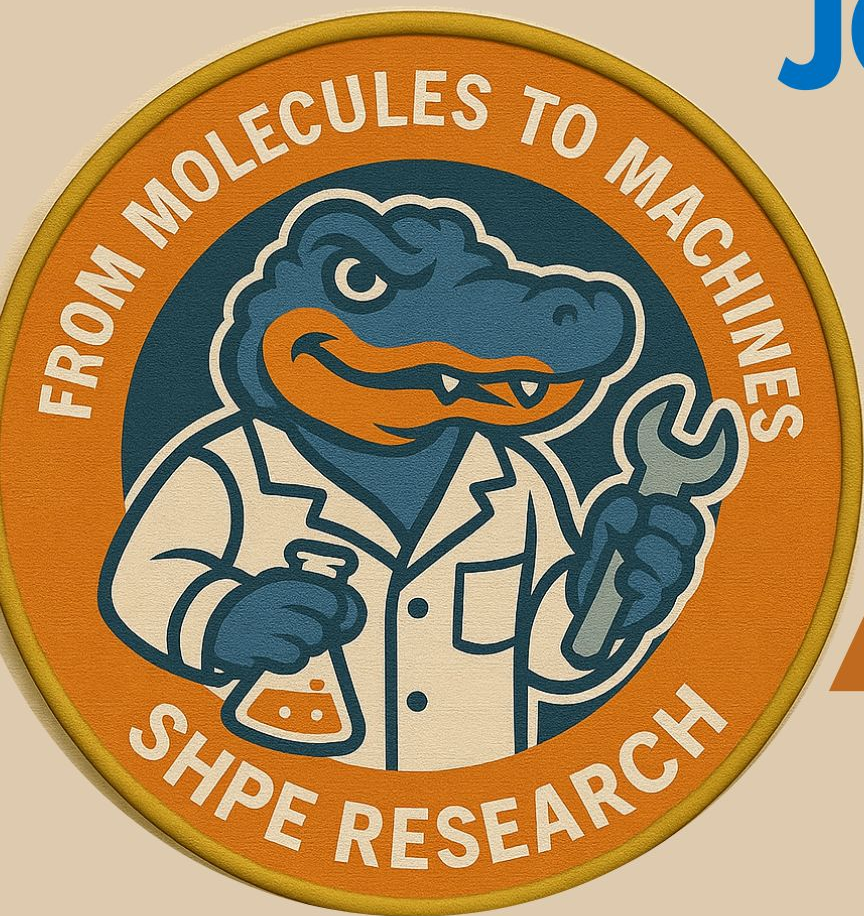
# NOW OPEN!

Interested in doing Research at UF?! SHPE UF's Research Team has partnered with multiple research laboratories on campus to offer SHPEitos first-hand experience doing research!

Applications Open: August 28th

Applications Close: September 3rd @11:59 PM





# JOURNAL CLUB

## Applications

# NOW OPEN!

Want to develop your research, presentation, and leadership skills? Join SHPE UF's Journal club. Gain experience discussing literature with fellow researchers. Apply now!

Applications Open: August 28th

Applications Close: September 3rd @11:59 PM



**BANK**

# **SHPE CAPITAL**

**Applications  
NOW OPEN!**

**Until September 4<sup>th</sup> @ 11:59 pm**



# FALL APPLICATIONS

Fall  
Directors



MentorSHPE

MENTORSHPE  
MENTOR



SHPE  
DESIGN TEAM

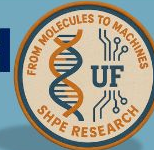
FYLP

SHPE  
CAPITAL



JOURNAL  
CLUB

RESEARCH  
TEAM





**GradSHPE**



**Instagram**

**FOLLOW**



**Follow to see graduate student  
researchers and discover  
opportunities for grad students!**

# SHPE HANGOUTS

**ARE BACK!**

**Study with fellow  
SHPEitos, hangout,  
and enjoy time in  
between class!**



# SHPE HANGOUTS

Join us in Marston Basement to hang out, study, or take a break with your fellow SHPEitos!

- Hangouts will be every weekday from 8 AM - 6 PM
- Schedule for the week will be posted every Monday morning on our Instagram!



**SHPE Hangouts**

<b>MONDAY</b> L118 8:00 AM - 6:00 PM	<b>TUESDAY</b> L118 8:00 AM - 6:00 PM
<b>WEDNESDAY</b> L118 8:00 AM - 6:00 PM	<b>THURSDAY</b> L118 8:00 AM - 6:00 PM
<b>FRIDAY</b> L118 8:00 AM - 6:00 PM	<b>Marston Basement</b> <i>Hangout with SHPEitos while doing school work!</i>

The graphic is a dark blue rectangular box with a white border. At the top, the text 'SHPE Hangouts' is written in a white, italicized, sans-serif font. Below this, the schedule is organized into a grid. The days of the week are listed in white text on orange rectangular backgrounds. Under each day, the room number 'L118' and the time '8:00 AM - 6:00 PM' are written in red text. The Friday slot is empty, and the corresponding space on the right contains a white location pin icon followed by the text 'Marston Basement' in white, and 'Hangout with SHPEitos while doing school work!' in white italicized font.

# SHPE ADVISING GROUP CHATS



Join our major group chats to ask questions, meet your advisor(s), and learn about your major

# SHPE ADVISOR GROUP CHATS



Biomedical



Chemical



Civil



Electrical



Environmental



Industrial



Materials



Mechanical/  
Aerospace



Nuclear



Comp Sci, Comp  
Engineering, DAS



# TUTEE INTEREST FORM



**SHPE**  
Leading Hispanics in STEM

University of  
Florida

# TUTEE INTEREST FORM

Fill out the form to be paired with a tutor for one of your classes! More tutoring will be available after GBM2, but for now we're only offering tutoring for Calculus 1 & 2.





# The SHPE *Book*

This book is designed for graduating seniors to complete a total of 15 bucket-list SHPE items throughout the year.

Completion of the SHPE Book will include an awarded graduate medallion for seniors to wear as they walk the stage!

Releasing on 09/10 at GBM 2!



# SHPE INTRAMURALS

## Team: Men's Indoor Soccer

**Sign-ups Open: September 22nd**  
**Season Begins: October 14th**



# SHPE INTRAMURALS

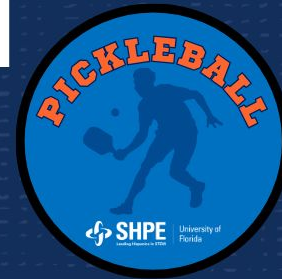
**Team:**

**Men's Basketball 3v3**

**Sign-ups Open: September 29th**

**Season Begins: October 14th**

# OUR ATHLETICS COMMUNITY





**SHPE**  
Leading Hispanics in STEM

University of  
Florida

Got a student  
ticket this  
season?

**JOIN OUR  
SHPE  
FOOTBALL  
BLOCK!**

Scan the QR  
code and link  
your tickets  
with our block  
to sit with  
SHPEitos at  
UF's home  
football games  
ALL season!

**BEN HILL GRIFFIN STADIUM**

# New Member Experience

## MEET THE TEAM



**VP of Internal Affairs**  
Grace Ramirez



**Lead NME Director**  
Diego Leon



**NME Director**  
Steven Trejos



**NME Director**  
Daniella Garces

## PROGRAM

- 1 PURPOSE**
  - Ensure that ALL new members feel welcome and part of the SHPE familia!
- 2 PROGRAMMING**
  - Special events catered for new members to help integrate them with the general body
- 3 CONNECTIONS**
  - Each new member will be part of a group led by a Director, giving you a circle of peers and support
  - Directors will keep in touch, invite you to events, and connect with you!



# Want to look professional at career events? Purchase a SHPE UF Padfolio today!

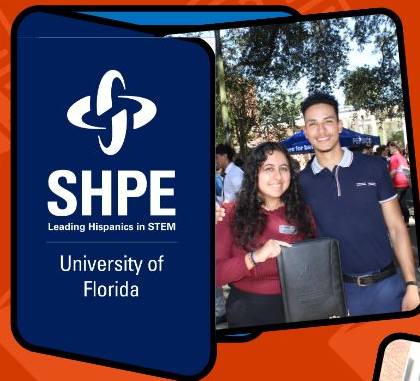
Deadline to submit form is September 10<sup>th</sup> at 11:59 PM.

**Use your padfolio  
to take notes at  
career fairs and  
keep your  
resumes crisp!**

Distribution will take place  
during GBM #3.

**Those interested in  
purchasing need  
to fill out the order  
form and submit  
proof of payment.**

\*Form of payment TBD\*



Scan this code to submit an order form!





**SHPE**  
Leading Hispanics in STEM

University of  
Florida

# Purchase a Nametag!

Stand out this **recruitment** season.



If you are interested, scan this code to fill out the order form and submit proof of payment!

**\*Form of payment TBD\***

Deadline to submit form is **September 10<sup>th</sup>** at 11:59 PM.

**Distribution will take place during GBM #3.**

## Use your nametag at events such as:



**BBQ w/Industry**



**UF Career Fair**

**SHPE National Convention**

**...and many others!**



# SHPE JR. CHAPTER



**Interested in developing a  
SHPE Jr. chapter at a high  
school? Fill out this form!**



# Research 101 Series

*SAVE THE DATES!*

**Sep: Undergrad Research at UF: What, Why, How?**

**Oct: Getting In: Finding Labs and Connecting with Faculty**

**Nov: Thriving in Research: Skills for Success in the Lab**



# GRAD 101 Series

The Roadmap to Graduate School



**Sep:** Graduate School Explained: Paths, Programs, and Possibilities

**Oct:** The Path to Grad School: Applications, Preparation, and Funding

**Nov:** Succeeding Beyond Admission: Life and Opportunities in Grad School



**CODE  
FOR CHANGE**  
HACKATHON

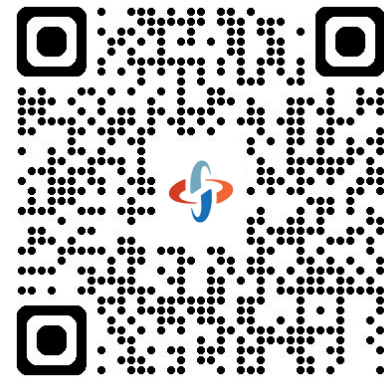
February 7<sup>th</sup> - February 8<sup>th</sup>, 2026

**PRE REGISTRATION IS OPEN!**

# CODE FOR CHANGE HACKATHON

## 24 Hour Coding Competition

- Code for Change is SHPE UF's 4th annual Hackathon.
- The purpose of the event is to bring together hackers to learn new skills and create innovative technologies that address real-world challenges, ultimately making our planet a better place
- All levels of experience are welcome to participate!

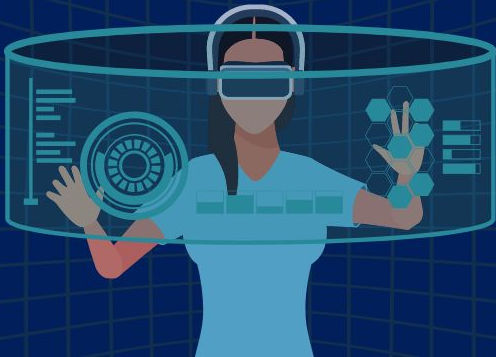


Scan to visit our  
website and pre  
register!



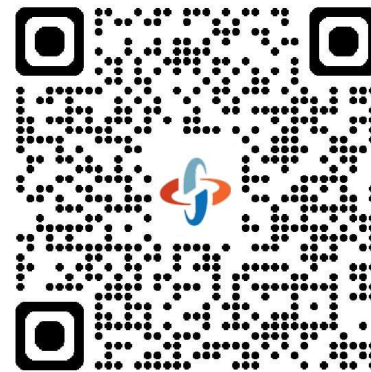
# JOIN THE TECH CABINET DISCORD!

Scan the QR code in the  
next slide to join



# TECH CABINET DISCORD

- The hub for all Tech Cabinet information like...
  - Design Teams
  - Code for Change
  - General questions
  - Event reminders
  - Tech community socials
  - & more!



Scan to Join!



**MEMBER AND ROOKIE OF  
GBM**

# Member of the GBM

Angie Lopez

- Major: Biomedical Engineering
- Year: 3rd Year
- Origin: Cuba/Spain
- SHPE Involvement:
  - 25-26 Lead Engagement Director
  - SU25 Event Director
  - SP 25 SHPE UF Presidential Scholarship Recipient
  - 24-25 Photography Director
- Aspirations:
  - I aspire to make a positive impact on people's lives, in my field, and in every community I'm part of, while also staying true to myself and embracing growth, connection, and new experiences along the way.
- Fun Fact:
  - I have a grad photography business (@\_alopezphotos)



# Rookie of the GBM

Edib Music

- Major: Computer Science
- Year: 2nd Year
- Origin: Bosnia/Herzegovina
- SHPE Involvement:
  - SU25 Event Director
  - NMWW Planning Committee Member
- Aspirations:
  - Lock in and get a SWE internship, and help others in SHPE get one as well
- Fun Fact:
  - I got lost in Istanbul





**TEAM OF THE GBM**

# Team of the GBM

Congratulations to our NEW MEMBER WELCOME WEEK TEAM!



Recruitment Directors: Manuela Castillo-Bermeo, Emma De Varona, Alfredo Auris, and Mohammed Alrubaye



# EVENTS

Celebrate the beginning of the seniors' last year!

# SENIOR SUNRISE & CAFECITO

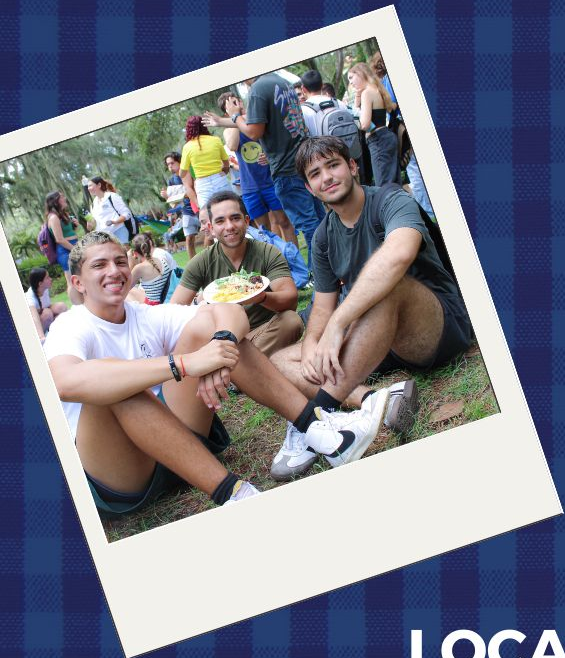


Watch the sunrise and join us after for some *cafecito* at a local coffee shop!

DEPOT PARK  
Friday, August 29th  
6:00 AM - 7:30 AM



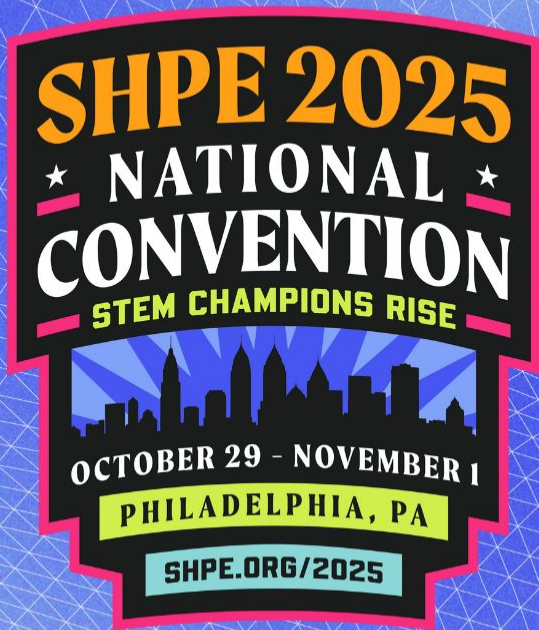
# LUNCH W/ EBOARD



**FRIDAY, AUGUST 29TH**

**12:00 PM - 2:00 PM**

**LOCATION: PLAZA OF THE AMERICAS**



SHPE 2025

# National Convention

## INFO SESSION

THURSDAY, SEPTEMBER 2ND

TIME: 6:00 PM - 7:00 PM

LOCATION: MCCA G186

# MentorSHPE MATCHMAKING EVENT



**THURSDAY, SEPTEMBER 4TH**

**TIME: 7:00 PM**

**LOCATION: TBA**



# FAMILIA WEEKEND

September 5th - September 7th



**SHPE**  
Leading Hispanics in STEM

University of  
Florida

# ITINERARY

7:00 PM -  
9:00 PM

Day 1



## RECEPTION & WELCOME

Join us for the opening to our Familia Weekend! Get to meet our members, Executive Board, and other SHParents. We will also be having a fun familia game night to break the ice!

1:00 PM -  
4:00 PM

Day 2



## FAMILIA SOCIAL

Experience our SHPE Familia through a fun social with lechon, music, and salsa!

4:15 PM -  
7:45 PM

Day 3



11:00 AM -  
2:00 PM

## BRUNCH & CLOSING

Join us one last time to close off the weekend. Enjoy some great brunch, get to recap on the weekend with other parents and students, and be ready for any final activities!

**RSVP FORM** >>>

Closes Sunday,  
August 31st!



# ExxonMobil

## INFO-SESSION

Learn about ExxonMobil opportunities and elevate your resume  
with direct feedback from an industry recruiter!

September 8<sup>th</sup>, 2025

6:00 PM - 7:30 PM

Weil 0270



University of  
Florida



**\*Info session is a collab with NSBE and SWE\***

# SHPE BOOTCAMP

A PROFESSIONAL DEVELOPMENT SERIES



# SHPE BOOTCAMP

Feeling overwhelmed & underprepared for this upcoming recruitment season? WE GOT YOU!

SHPE Bootcamp is a series of Workshops that cover all the topics including:

- Resume Prep
- Elevator Pitch
- Behavioral Interviews
- Case & Tech Interviews

... and more!



# SHPE BOOTCAMP #1

Intro to Professionalism, Resumes, and Elevator Pitch

Tuesday, September 9th

6:00 PM - 8:00 PM

Location: TUR L011



Partner

SHPE



# PARTNERSHPE GBM #1

Are you a Santa Fe engineering student interested in transferring to UF? Come out to our first PartnerSHPE GBM to learn about how SHPE can help you!

When: Wednesday, September 10th

Where: TBA

Time: 3:00pm-4:00pm



**Join the PartnerSHPE  
WhatsApp Community!**



**Follow the Instagram!**



# MentorSHPE PICNIC



**FRIDAY, SEPTEMBER 12TH**

**TIME: 12-2PM**

**LOCATION: PLAZA OF THE AMERICAS**



# BBQ with Industry



**MONDAY, SEPTEMBER 29TH**  
**TIME: 11:00 AM - 4:00 PM**  
**LOCATION: FINE ARTS COURTYARD**



**SHPE**  
Leading Hispanics in STEM

University of  
Florida

# BBQ WITH INDUSTRY

SHPE-UF's biggest recruiting event of the fall!

**\*You must be a national member to eat BBQ!**

When: Monday, September 29th

Time: 11 AM - 4PM

Where: Fine Arts Courtyard!



**Resume Drop**



**Volunteer Form**





**WHAT'S NEXT?**

# CON LA REGION 7...



**SHPE**  
Leading Hispanics in STEM

University of  
Florida

# SHPE UF

## SPRING 2025 MEMBER SURVEY RECALL



**SHPE**  
Leading Hispanics in STEM

University of  
Florida

**65% use  
GBMs/Insta  
to stay  
updated**

**93.6% said  
Prof. Dev.  
resources  
helped**

**Favorite  
events:  
SOCIALS!**

**Favorite  
social media:  
REELS!**



**Obstacle:  
Scheduling  
Conflicts**



**SHPE**  
Leading Hispanics in STEM

University of  
Florida

**Increase  
mentor  
commitment**

**60% said  
financial  
resources  
matter**

**LOVE  
major  
chats!**

**Increase  
SHPEitos in  
research**

**Your input  
used for  
TLDP!**



**SHPE**  
Leading Hispanics in STEM

University of  
Florida

# Fall 2025 Kickoff Survey



The background of the image consists of a repeating pattern of vertical lines in three colors: orange, light blue, and dark blue. These lines are scattered across the white background, creating a rain-like or confetti effect. A solid dark blue horizontal band runs across the middle of the image, containing the text.

# GBM 1 RAFFLE

# HERE FOR YOU!

A group of young men are gathered outdoors on a grassy field. They are all smiling and have green face paint on their cheeks and forearms. Several of them have their fists raised in a celebratory gesture. They are wearing various casual clothing, including t-shirts and a baseball cap. The background shows trees and a clear sky.

**We are here for any questions or concerns you may have!**

# CONNECT WITH US!



Find all the links  
from tonight here!



@SHPEUF



@SHPE at the University of Florida

# September

SUNDAY	MONDAY	TUESDAY	WEDNESDAY	THURSDAY	FRIDAY	SATURDAY
24	25 New Member Welcome Info Session	26 SHPE Games	27 Powerpoint SHPalooza	28 <b>SHPE GBM #1</b> Director Apps Open	29 Senior Sunrise & Cafecito Lunch with Eboard	30
31	1 LABOR DAY	2 Mentor Apps Close National Convention Info-Session	3	4 Mentee Apps Open	5 Familia Weekend Familia Reception & Welcome	6 Familia Weekend
7 Familia Weekend Familia Brunch & Closing	8 Exxon-Mobil Info Session	9 Bootcamp #1	10 <b>SHPE GBM #2</b>	11	12 Mentee Apps Close	13
14	15 P&G Info Session	16 Bootcamp #2	17 Whiting-Turner Info Session	18 MentorSHPE Reveal	19	20
21	22 Bootcamp 2.5 with P&G	23 Bootcamp #3	24 <b>SHPE GBM #3</b>	25	26	27

# THANK YOU TO OUR PARTNERS!



accenture



Capital One



WT  
WHITING-TURNER



CDM  
Smith.



Kimley»Horn



LJA



SOLIDIGM.



Bloomberg



ExxonMobil



Trinity  
Consultants



FM



Disney



Jane  
Street



FIFTH THIRD



TEXAS  
INSTRUMENTS



SHPE  
Leading Hispanics in STEM

University of  
Florida