

EVENT CODE: GOLDENGATORSX2

Go to shpeuf.com or use the **SHPE UF Mobile App**

Go to **Points Program** → **Redeem Code**





GENERAL BODY MEETING #6

Society of Hispanic Professional Engineers
November 5th, 2025



GUEST SPEAKERS

November 5th, 2025

The ELITE Program

Engineering Leaders in Transfer Engagement

Alejandra Muguerza

Research Assistant & Program Coordinator

Caroline Lubbe

PhD. Candidate

Sindia M. Rivera-Jiménez, Ph.D.

Assistant Professor, Department of Engineering Education

Affiliate Faculty, Chemical Engineering Department

Affiliate Faculty, Institute of Higher Education, College of Education

University of Florida

Juana Villamil Rodriguez and Maria Camila Herrera Palacio



Engineering Communities & Participatory Change

Engineering Education Research Group

[http://](http://riverajimenez.com)  riverajimenez.com



This material based approach supported by the National Science Foundation under Grant No. 2220979. Any opinions, findings, and conclusions or recommendations expressed in this material are those of the author(s) and do not necessarily reflect the views of the National Science Foundation.



★ Are you an engineering undergraduate student who transferred to the University of Florida from another institution?

Researchers at the University of Florida want to learn more about your post-transfer experience.



UF ET #00047771

REQUIREMENTS :

- At least 18 years of age
- An undergraduate engineering student
- Attended a different institution prior to UF

PARTICIPATE NOW :

- If selected to participate, you will receive a **\$25 Amazon** gift card as compensation.
- There are no risks anticipated by participating in this study.

★ Questions? Contact Caroline Lubbe at clubbe@ufl.edu or Dr. Sindia Rivera Jiménez at rivera.jimenez@eng.ufl.edu. ★



ELITE Program

Empowering transfer students to connect, lead, and succeed!



Workshops

- Skill-building sessions focused on academic success, career preparation, and campus involvement.



Peer Mentorship

- One-on-one support from experienced transfer students who've navigated the UF experience.



Leadership

- Pathways for students to take leadership roles: mentoring, organizing events, serving on program committees.



Community Building

- Creating a supportive, welcoming space where transfer students can share experiences.

Program Evaluation Using Educational Research Design Methods

THANK YOU!



**Engineering Communities
& Participatory Change**

Engineering Education Research Group

[http://](http://riverajimenez.com)



riverajimenez.com

AGENDA



Announcements



Upcoming Events

MEMBERSHIP

SHPE UF Membership:

- Visit shpeuf.com
- Free to sign up and make a profile
- Access to points program and internal resources

SHPE National Membership:

- Visit shpeconnect.org
- \$10 Undergraduate Membership fee
- You must be a national member to:
 - Apply for director positions & programs
 - Attend National Convention
- Access to SHPE National scholarships and resources

The screenshot shows a web registration form titled "REGISTRATION". The form includes fields for First Name, Last Name, Major, Year, Graduating this year?, Country of Origin, Ethnicity, Gender, Username, UF/SF Email, Password, and Confirm Password. A note at the bottom states: "At least 8 characters. It must contain at least one lowercase character, one uppercase character, one number, and one special character."

The screenshot shows the SHPE National "Sign In or Create an Account" page. It features the SHPE logo and the tagline "Leading Hispanics in STEM". The page has two main sections: "Not a Registered User Yet?" and "Login". The "Not a Registered User Yet?" section includes a "Go" button and a note: "If you are a visitor and do not already have a username and login, please enter your email below." The "Login" section includes fields for "Email Address" and "Password", a "Remember Me" checkbox, a "Forgot Your Password?" link, and a "Login" button.

SHPEUF.COM



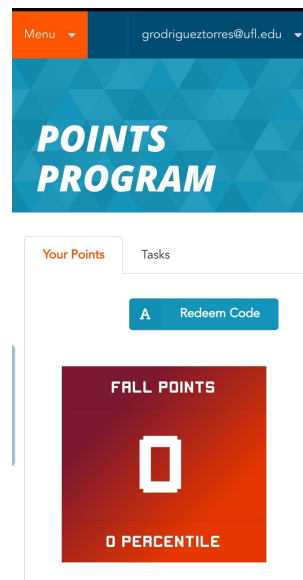
1

Homepage

A mobile app screenshot of the registration form. The top navigation bar is blue with 'Menu' and a home icon. Below the navigation is an orange header with the word 'REGISTRATION' in white. The form contains several input fields: 'First Name', 'Last Name', 'Major' (with a dropdown menu showing 'Aerospace Engineering'), 'Year', 'Graduating this year?' (with a dropdown), 'Country of Origin', and 'Ethnicity'.

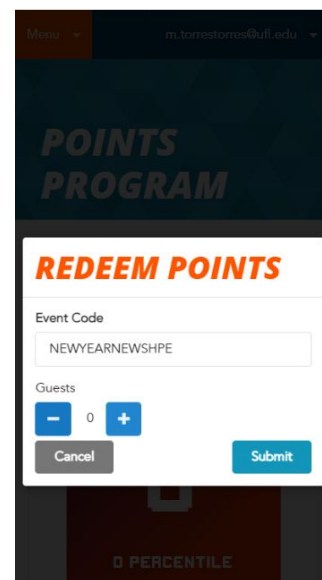
2

Registration



3

Points Rewards



4

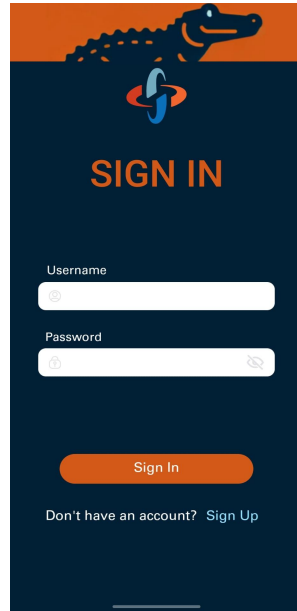
Enter Code

MOBILE APP



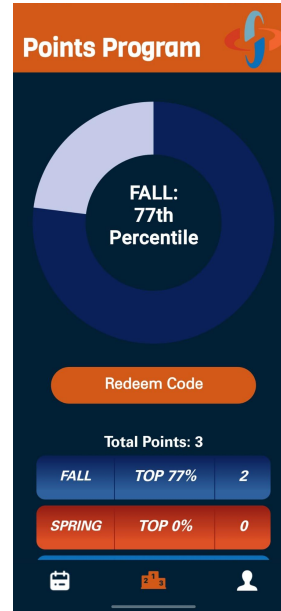
1

Homepage



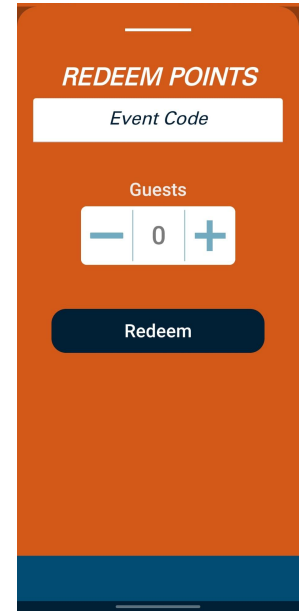
2

Registration



3

Points Rewards

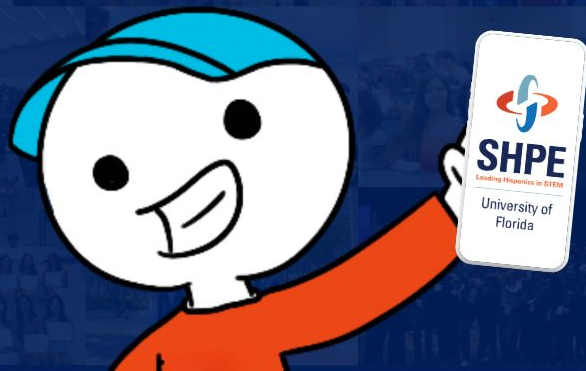


4

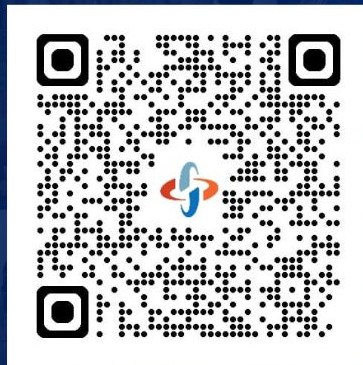
Enter Code

DOWNLOAD THE SHPE APP OUT NOW!

- KEEP UP TO DATE WITH EVENTS
- INPUT YOUR CODES FOR SHPOINTS QUICKLY
- MORE FEATURES!



ANDROID APP



IOS APP



STAY UP TO DATE

Google Calendar

- Includes all SHPE UF events and can be easily added to your own Google Calendar
- Each event will include all necessary information for you to be in the know

Instagram

- @shpeuf
- Weekly posts with all info for the week

WhatsApp Community


- Reminders, quick announcements, updates, and all SHPE-related chats

■ Fall GBM 1

Thursday, August 29 · 6:15 – 7:30pm

[Invite via link](#)

 TUR L007

 **In-Person Location:** Turlington Hall L007
Zoom Link: <https://ufl.zoom.us/j/99836320537>

 30 minutes before

 SHPE UF Master Calendar





ANNOUNCEMENTS



CONVENTION RECAP

CONVENTION Ws

Gators were shining stars this convention!

- Region 7 Spirit Challenge Chapter Winner
- Convention Soccer Tournament Champions
- STEM Research Undergraduate Oral Presentation 3rd Place
- Cyber Security Challenge Champions
- Region 7 Member Award
- Region 7 Superlative Award
- Region 7 Undergraduate Chapter of the Year
- #1 Represented Chapter
- Gold National Chapter Award

REGION 7 SPIRIT CHALLENGE

WINNING CHAPTER



SOCCER TOURNAMENT

CHAMPIONS!!!

WE SAID IT'S GREAT. TO BE. A FLORIDA GATOR.

Roster:

- Daniel Alvarez
- Patrick Leimer
- Nicolas Liway
- Victor De Figueiredo
- Sebastian Garcia
- Legasse Remon
- Sebastian Sobrino
- Jose Manriquez
- Efren Lopez



Head Coach: Daniel Fontes

STEM RESEARCH

Undergraduate Oral Presentation - 3rd Place

Jovan Ghulldu placed 3rd on the Undergraduate Oral Presentation Competition!

Students interested in participating in the Research Paper Presentations must submit an abstract for consideration. Selected participants will deliver a 10-minute oral presentation followed by a 5-minute Q&A session.



CYBERSECURITY CHALLENGE

CHAMPIONS!!!

Congrats to **Patrick Leimer** and **Legasse Remon** for their victory in the Cybersecurity Challenge!

The Cybersecurity Challenge at the 2025 SHPE National Convention is a virtual "capture the flag" competition where teams of STEM students compete to complete interactive challenges as quickly as possible. The event is designed to help students develop skills and networks to become better at predicting and outsmarting hackers.



“PARA LA FAMILIA”

AWARD

Juan Yarala received the “Para la Familia” award at our Region 7 Ceremony!

“Para La Familia” Award - This is for someone who is leading efforts in community outreach and is looking to impact lives just beyond their own growth. Examples include Mentoring, leading, and setting the example to why SHPE is a Familia.



“SHARKTALES”

Airam Gonzalez received the “Sharktales” superlative at our Region 7 Ceremony!

“Sharktales” Superlative - Best Storyteller in Region 7



R7 CHAPTER OF THE YEAR

Undergraduate



THE SWAMP IN PHILLY

#1 Represented Chapter

OVER 270 GATORS IN PHILADELPHIA!!



NATIONAL GOLD CHAPTER AWARD

SHPE UF was awarded a SHPE National **Gold Chapter Award!**

This is given to high achieving chapters who excel in recruitment, retention, and post-graduation success!

UF was one out of just 4 chapters to receive this award! Thank you to our **2024-2025 E-Board** on the previous year's accomplishments!



POST-CONVENTION SURVEY

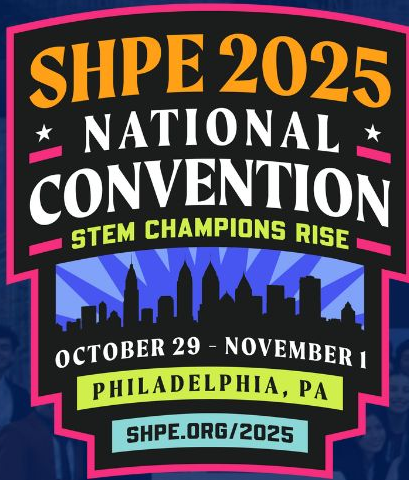
Now that convention is over, we'd love to hear your feedback!

Help us help you by filling out this survey! Filling it out helps us better develop our resources to prepare for next year!

ELIGIBLE TO WIN SHPoints!!



Post Convention Survey!



National Convention SHPHOTOS



SHPEito Uploads

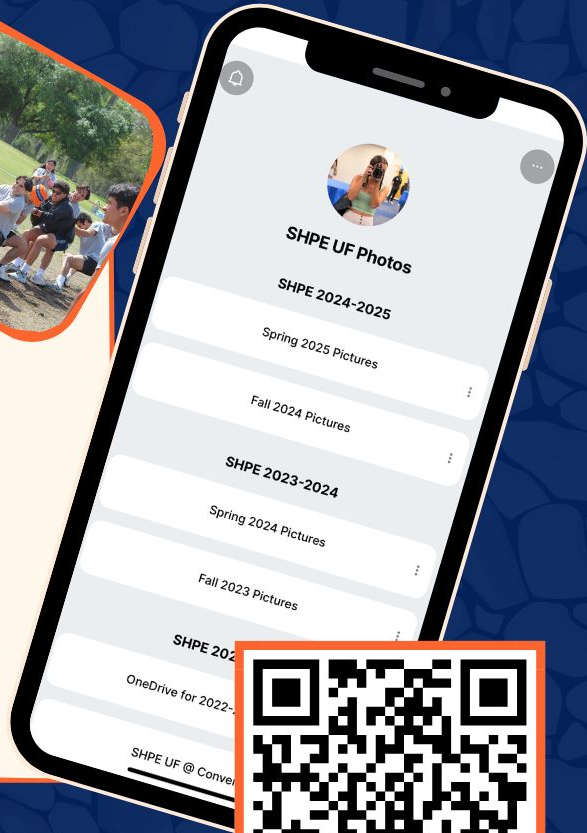


Camera Photos



SHPHOTOS

LINKTREE + DRIVES



SENIOR GRAD PHOTOS



WELCOME TO SHPE EDUCATION

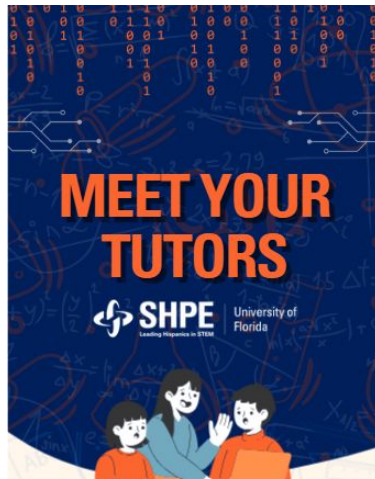


SHPE
Leading Hispanics in STEM

University of
Florida

WELCOME TO SHPE EDUCATION

You can now access the Welcome to SHPEducation Drive! Access the Tutor and Advisor Roster, Major Survival Guides, and Meet the Tutors Doc!



SCHOLARSHIP OPPORTUNITIES

THE REVPART 2026 STEM SCHOLARSHIP

Any student majoring in a STEM field that is attending an accredited college in the USA may apply. The 2026 scholarship winner will be awarded to an undergraduate or graduate student to be used towards their degree.



SCIENTIST.COM STEM RESEARCH NIL AWARD

Offers their own NIL grant of \$50,000 to be divided among 10 promising junior or senior undergraduate researchers (\$5,000 each). Their team believes that supporting people in entering STEM fields is crucial to the future of innovative scientific research.



**CODE
FOR CHANGE**
HACKATHON

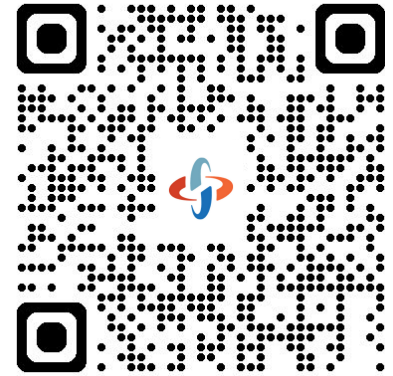
February 7th - February 8th, 2026

PRE REGISTRATION IS OPEN!

CODE FOR CHANGE HACKATHON

24 Hour Coding Competition

- Code for Change is SHPE UF's 4th annual Hackathon.
- The purpose of the event is to bring together hackers to learn new skills and create innovative technologies that address real-world challenges, ultimately making our planet a better place
- All levels of experience are welcome to participate!

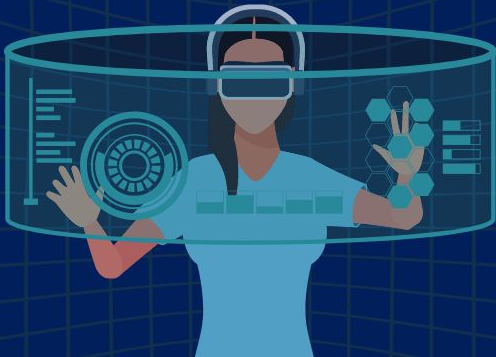


Scan to visit our
website and pre
register!



JOIN THE TECH CABINET DISCORD!

Scan the QR code in the
next slide to join



TECH CABINET DISCORD

- The hub for all Tech Cabinet information like...
 - Design Teams
 - Code for Change
 - General questions
 - Event reminders
 - Tech community socials
 - & more!



Scan to Join!



SHPEito

Research Team Spotlight

SHPEito Researcher Spotlight

Smart, Effective, Resilient Mobility Systems (SERMOS) Lab



Josh Caron

Studies data-driven mobility and evacuation systems to enhance transportation resilience.

Combines AI, behavioral modeling, and infrastructure analysis to support equitable and efficient movement of people during everyday travel and emergencies.

INTRODUCING...

SHPREP ON DEMAND



Our newest career support system!

We are offering multiple resources including:



Resume Reviews

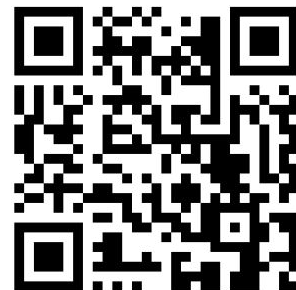


Mock Interviews



1:1 Career Consultations

If interested in
volunteering,
scan this QR
code!



Bootcamp style office hours, whenever you need them. Opening to SHPEitos at GBM 7!

Introducing...

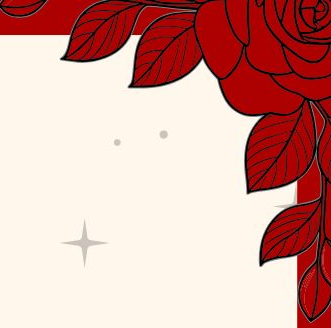
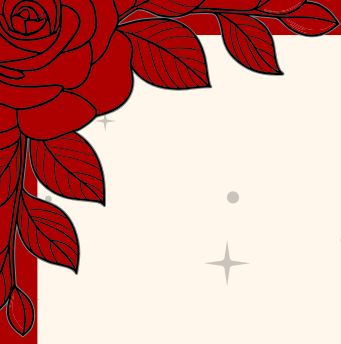
SALSA Prom

Una Noche de Salsa

DEC 4th @ 7PM

Tinker Restaurant

Invite-only event



SHProm Superlatives



Nomination Form

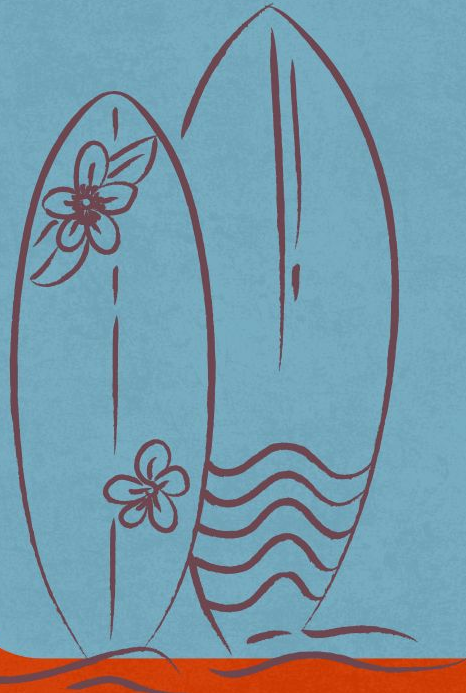
Deadline: SUNDAY, NOV. 9TH AT 11:59PM



Senior Fall Trip



**Location: St. Augustine
Beach Day!
Sunday, November 16th**





Senior Spring Trip

March 6th-8th

1st Deposit Deadline: Friday, Nov. 7th at 11:59PM



Leading Hispanics in STEM

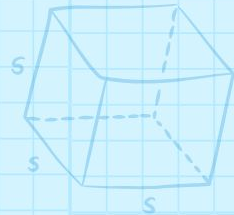
University of Florida

NCF

$$a + b = b + a$$



$$V = \frac{4}{3}\pi r^3$$

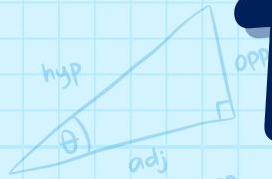


$$V = s^3$$

$$5 + 5 = 10$$

MATH

$$1 + 2 = 3$$
$$3 + 5 =$$



$$\sin(\theta) = \frac{\text{opp}}{\text{hyp}}$$

TUTORING

$$x = \frac{-b \pm \sqrt{b^2 - 4ac}}{2a}$$

NCF Math Tutoring Interest

Come volunteer through SHPE Jr at NCF as a math tutor for students in Algebra and Geometry!

Great SHPoints opportunity!!!

This will be a recurring volunteering commitment, and any help is welcome. Fill out the interest form to be able to pick the best dates/times!

Date: Varies

Time(s): 9:40-10:45am & 10:50am-12:00pm & 1:00pm-2:15pm

Location: North Central Florida Charter High School

Interest form:





GiftBack Foundation presents...

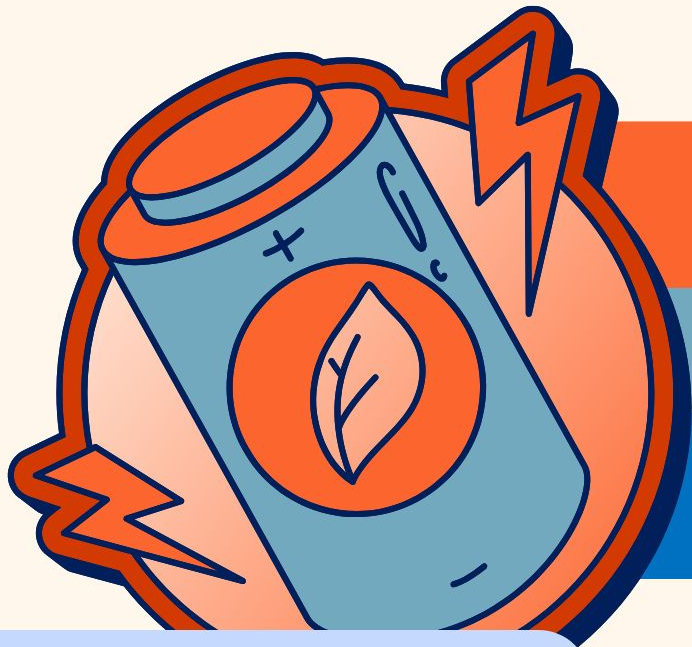
GIFT CARD DRIVE

A great opportunity for SHPoints!

EXTENDED! collecting at GBM 8!

MORE INFO
HERE!





BATTERY

Collection

DRIVE

EXTENDED COLLECTION TIME!

Collecting at **GBM 8!**

Amazing **SHPOINTS**
opportunity!



MEMBER AND ROOKIE OF GBM

Member of the GBM

Angie Arrasco Pinedo

- Major: Materials Science & Engineering
- Year: 2nd Year
- Origin: Peru
- SHPE Involvement:
 - SP25 FYLP
 - Journal Club Member
 - Research Team Member
 - Research Lab Experience Director
- Aspirations:
 - Striving to get an internship this summer, aspire to delve into research as much as possible and continue taking on positions in the Research Cabinet, hope to make more genuine connections and friendships in SHPE. I want to continue inspiring others and build our passions as future engineers!
- Fun Fact:
 - I love to dance salsa and bachata!



Rookie of the GBM

Marcos Viloria

- Major: Electrical Engineering
- Year: 2nd
- Origin: Venezuela
- SHPE Involvement:
 - FA25 Content Director
 - FA25 SHPE Capital Analyst
 - MentorSHPE Mentee
 - Tabling Volunteer
- Aspirations:
 - I hope to make a lasting impact in my career by expanding clean energy opportunities for underrepresented communities and helping shape a more sustainable and energy-efficient music industry.
- Fun Fact:
 - I traveled this summer to Spain/Portugal and met Maná!





TEAM OF THE GBM

Team of the GBM

Congratulations to our BOOTCAMP Team!



Bootcamp Directors: Alexandra Tabares, Legasse Remon,
Alexandra Grant, & Ana Gutierrez



EVENTS

SHPEWorks



Bridging the Gap

Learn more about forces, moments, free-body diagrams, and trusses and compete in friendly competition where attendees will work in teams to build and test popsicle stick bridges for prizes!

A light gray rectangular graphic with a torn top edge and two orange tabs on the top corners, containing event details.

Thursday, November 6th
4:00 - 5:30 PM
Location: LIT 0235





MENTORSHPE

Social

Join your fellow witches and wizards for an afternoon of spells, stories, and shared wisdom.



PROFESSOR TITO

Thursday. November 6

6:30 - 7:30 PM

Location: TBA

TEA LAB TOUR



TEA: Trustworthy
Engineered
Autonomy Lab

Join us for a lab tour hosted by
Dr. Ruchkin, an Assistant
Professor in the Electrical &
Computer Engineering
Department!

Friday, November 7th
6:00 - 7:15 PM
Malachowsky Hall 4100



Areas of research:

Formal methods
AI/machine learning
Cyber-physical systems
Small-scale autonomous racing cars



Tasks of interest:

Verification, modeling
Monitoring, prediction
Control, synthesis





SHPE RUNS

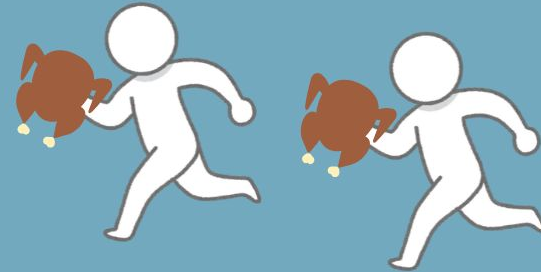


Turkey Trot

Saturday, November 8th

9:00 AM

Location: Depot Park



NME X F LP

BAT HOUSE PICNIC



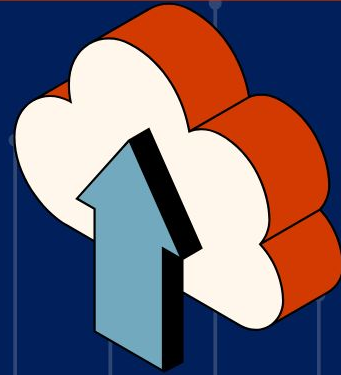
November 9th
5:00 PM - 6:00 PM
UF Bat Houses

SHPEWorks Cyber Presents...

HACKING THE WEB

Date of Event: November 10th
Time of Event: 4:00-5:30
Location: LIT 0221

Come learn how to identify vulnerabilities in the web while understanding how to use this information for your own internet security!



CAD Kickstart

November 12th, 2025

Time: 3:30 P.M. - 4:30 P.M.

Location: TBD

An introduction to CAD using a Onshape,
a free & browser-based program



onshape®

Bring a laptop &
make a free
Onshape account
beforehand



University of
Florida

SHPE Coach

Wednesday, November 12th

5:45 PM

Location: Weil Hall 279



SHPE
Leading Hispanics in STEM

University of
Florida

FinanceSHPE#3



Planning Ahead

We will cover:

- **Budgeting** - How to make a budget + make sure you don't go negative each month
- **Retirement**- Roth IRAs/401ks/Back Door Roth/etc
- **Internship Money** - Stipend vs Corporate Housing, how direct deposit/paychecks work biweekly, finding housing in major cities, how to avoid getting double taxed if you work out of Florida, etc

Thursday, November 13th

6:00 - 7:00 pm

Location: Matherly 0113



SHPEWorks Cyber Presents...

CRACKING THE CODE

Date of Event: November 17th
Time of Event: 4:00-5:30
Location: LIT 0221

Come learn how to identify different types of cryptography and understand how to test their strength and extract hidden information!



SHPETINA COOKIE SOCIAL

**MONDAY, NOVEMBER 17TH
6:00 - 7:00 PM
TBD**

DRESS CODE: CHRISTMAS!!!





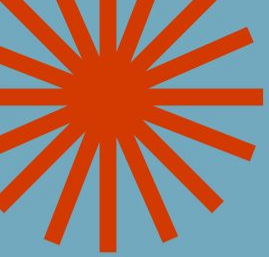
FRIENDSGIVING + Donation Drive

Tuesday, November 18th

6:00 - 8:00 PM

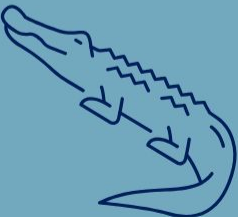
Location: Plaza of the Americas





Partner  **SHPE**

In The Swamp



In The Swamp

Explore the labs and STEM + Engineering programs at UF during an exciting campus tour with interactive activities and displays!

Participate in exciting activities with other SHPEitos and attend the SHPE UF GBM all together!

Date: November 19th, 2025

Location: UF Campus

Time: 3-6pm



RSVP Form



SHPE
EQUIPANDO PADRES
ACADEMY



NOVEMBER 20th

6:00-8:00PM

FIU I-75 Campus

1930 SW 145th Ave, Miramar, FL 33027



Register now!

JOIN OUR ESCUELITA
Workshop for parents of
precollege students!

Your registration includes:

- guidebook
- supplies
- giveaways

Hosted by engineering
students and professionals!

TOPICS

- Why College?
- How to Choose a College
- Preparing for College Visits
- Applying to College
- Paying for College

QUESTIONS?

epa.shpeuf@gmail.com



HERE FOR YOU!

A group of young men are gathered outdoors on a grassy field. They are all smiling and have green face paint on their cheeks and forearms. Several of them have their fists raised in a celebratory gesture. They are wearing various casual clothing, including t-shirts and a baseball cap. The background shows trees and a clear sky.

We are here for any questions or concerns you may have!

CONNECT WITH US



Find all the links
from tonight here!



November

SUNDAY	MONDAY	TUESDAY	WEDNESDAY	THURSDAY	FRIDAY	SATURDAY
26	27 Pre-Convention Social	28	29 SHPE National Convention	30 SHPE National Convention	31 SHPE National Convention	1 SHPE National Convention Weekend
2	3	4 Grad & Research 101	5 SHPE GBM #6	6 SHPEworks Mech MentorSHPE Social	7 TEA Lab Tour Senior Game Night	8 Turkey Trot Run
9	10 SHPEworks Cyber	11 Veterans Day - No School	12	13	14	15
16	17 SHPEtinias Social	18 SHPE Friendsgiving	19 SHPE GBM #7	20 SHPEworks x Colorstack	21	22
23	24	25	26	27	28	29

THANK YOU TO OUR PARTNERS!

