



# HAPPY HOLIDAYS

Go to [shpeuf.com](https://shpeuf.com) or use the **SHPE UF Mobile App**  
Go to **Points Program** → **Redeem Code**



**GENERAL BODY MEETING #8**  
**Society of Hispanic Professional Engineers**  
**December 3rd, 2025**



# GUEST SPEAKERS

# AGENDA



Announcements



Upcoming Events

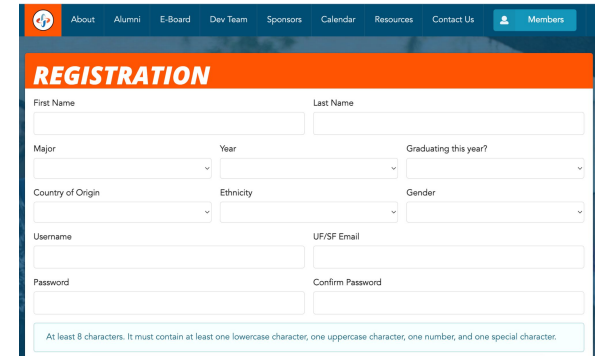
# MEMBERSHIP

## SHPE UF Membership:

- Visit [shpeuf.com](https://shpeuf.com)
- Free to sign up and make a profile
- Access to points program and internal resources

## SHPE National Membership:

- Visit [shpeconnect.org](https://shpeconnect.org)
- \$10 Undergraduate Membership fee
- You must be a national member to:
  - Apply for director positions & programs
  - Attend National Convention
- Access to SHPE National scholarships and resources



The screenshot shows a web registration form for SHPE UF. The form is titled "REGISTRATION" in a blue header. It includes fields for First Name, Last Name, Major, Year, Graduating this year?, Country of Origin, Ethnicity, Gender, Username, UF/SF Email, Password, and Confirm Password. A note at the bottom states: "At least 8 characters. It must contain at least one lowercase character, one uppercase character, one number, and one special character."



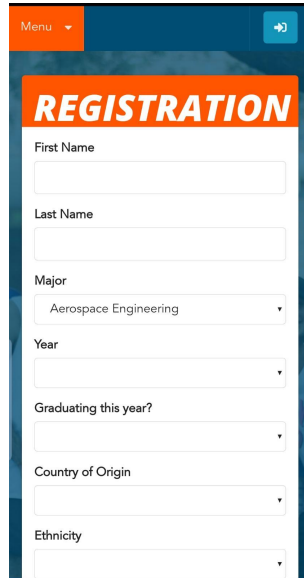
The screenshot shows the SHPE National "Sign In or Create an Account" page. The SHPE logo is at the top. Below the header, there is a "Sign In or Create an Account" section with a note: "Please sign in or create a new user account. If your login information is displayed below, then you are already logged in." There are two main sections: "Not a Registered User Yet?" and "Login". The "Login" section has fields for Email Address and Password, a "Remember Me" checkbox, and a "Forgot Your Password?" link. A "Go" button is located at the bottom left of the form.

# SHPEUF.COM



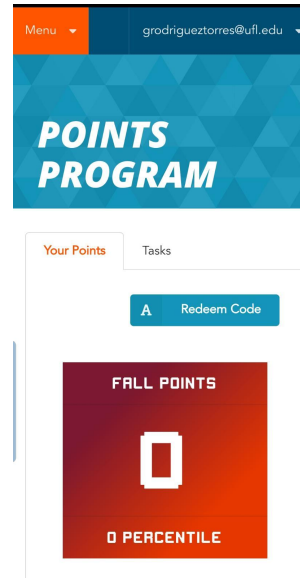
1

Homepage



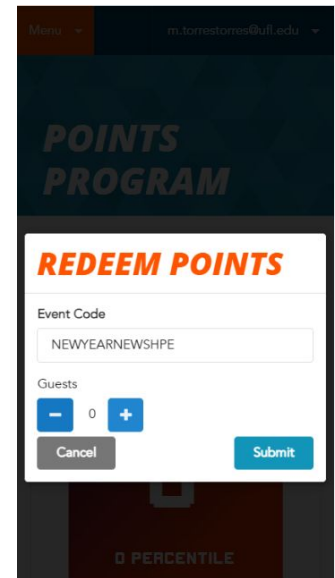
2

Registration



3

Points Rewards



4

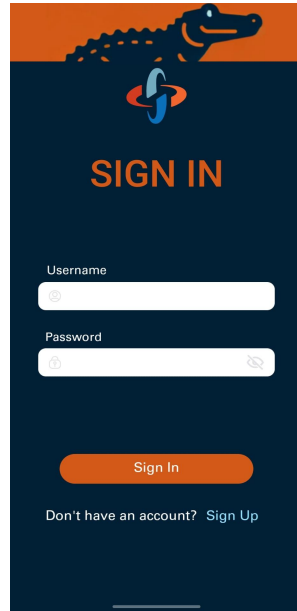
Enter Code

# MOBILE APP



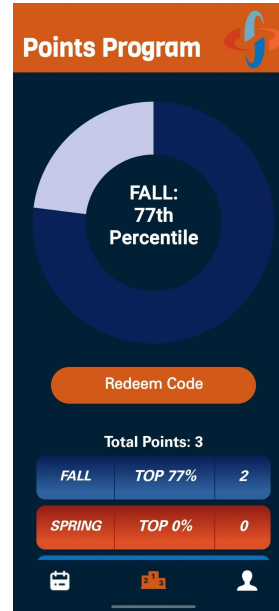
1

Homepage



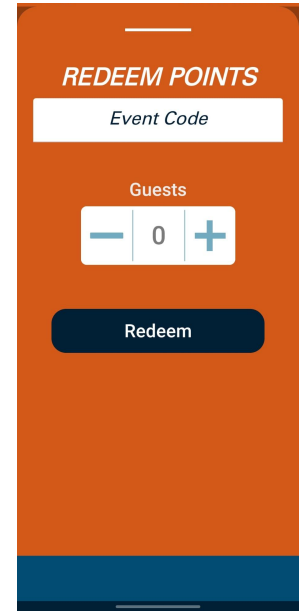
2

Registration



3

Points Rewards

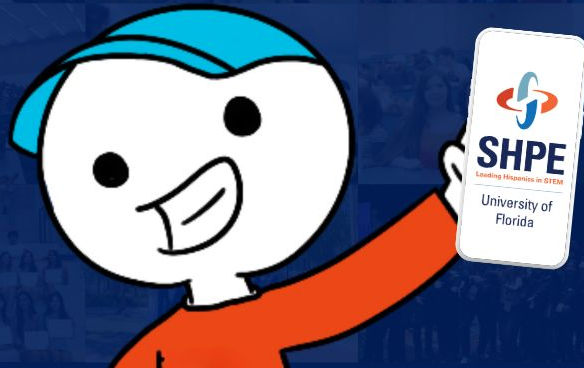


4

Enter Code

# DOWNLOAD THE SHPE APP OUT NOW!

- KEEP UP TO DATE WITH EVENTS
- INPUT YOUR CODES FOR SHPOINTS QUICKLY
- MORE FEATURES!



ANDROID APP



IOS APP



# STAY UP TO DATE

## Google Calendar

- Includes all SHPE UF events and can be easily added to your own Google Calendar
- Each event will include all necessary information for you to be in the know

## Instagram

- @shpeuf
- Weekly posts with all info for the week


## WhatsApp Community


- Reminders, quick announcements, updates, and all SHPE-related chats

### ■ Fall GBM 1

Thursday, August 29 · 6:15 – 7:30pm

 Invite via link

 TUR L007

 In-Person Location: Turlington Hall L007  
Zoom Link: <https://ufl.zoom.us/j/99836320537>

 30 minutes before

 SHPE UF Master Calendar





# ANNOUNCEMENTS



**CODE  
FOR CHANGE**  
HACKATHON

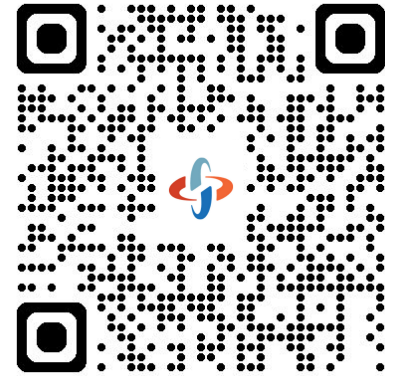
February 7<sup>th</sup> - February 8<sup>th</sup>, 2026

**PRE REGISTRATION IS OPEN!**

# CODE FOR CHANGE HACKATHON

## 24 Hour Coding Competition

- Code for Change is SHPE UF's 4th annual Hackathon.
- The purpose of the event is to bring together hackers to learn new skills and create innovative technologies that address real-world challenges, ultimately making our planet a better place
- All levels of experience are welcome to participate!

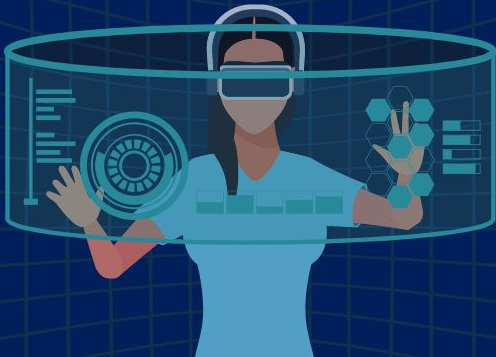


Scan to visit our  
website and pre  
register!



# JOIN THE TECH CABINET DISCORD!

Scan the QR code in the  
next slide to join



# TECH CABINET DISCORD

- The hub for all Tech Cabinet information like...
  - Design Teams
  - Code for Change
  - General questions
  - Event reminders
  - Tech community socials
  - & more!



Scan to Join!

# Calling ALL talented CAD designers!

## Your task:

Create a 3D trophy design related to the **Engineering Research Symposium** by the second GBM of **Spring 2026** for a chance to win a prize!



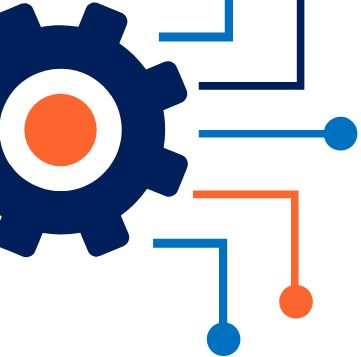
# TROPHY CAD DESIGN CONTEST



**SHPE**  
Leading Hispanics in STEM

University of  
Florida





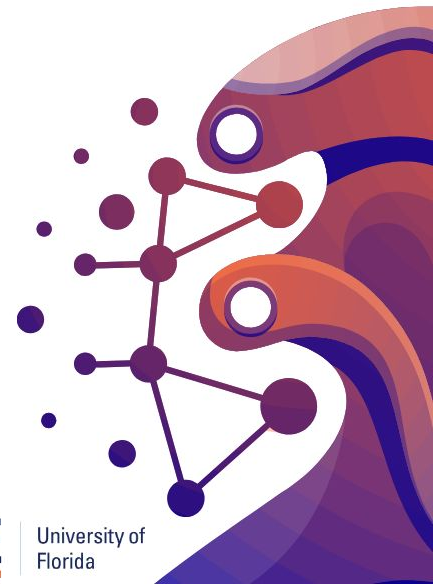
# SHPE UF'S FIRST DESIGNATHON

March 7th, 2026

Interest form



University of  
Florida



# DESIGNATHON INTEREST FORM

- Get ready for an intensive, fast-paced challenge! The Research Cabinet is exploring our first Engineering Designathon this Spring.
  - **What is it?** A time-bound event where multidisciplinary teams rapidly design and prototype a solution to a real-world engineering challenge.
  - **What you'll gain:** Hands-on experience with the human-centered design process, boosting your skills in computer-aided and electrical design.
  - **The Goal:** Collaborate, solve problems creatively, and present your final prototype to judges.



[Scan to Join!](#)

# Scholarship Database

**RELEASE**





**GiftBack** Foundation presents...

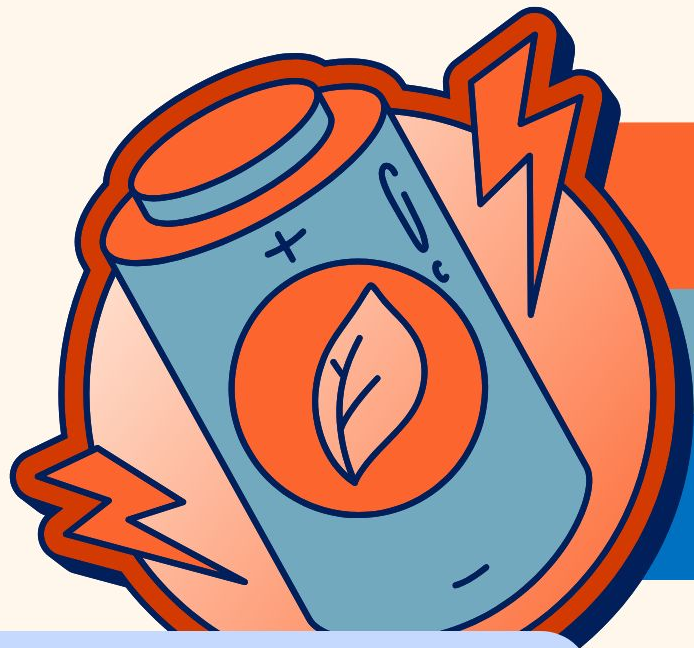
# GIFT CARD DRIVE

A great opportunity for SHPoints!

EXTENDED! collecting at GBM 8!

MORE INFO  
HERE!





# BATTERY

*Collection*

# DRIVE

**EXTENDED COLLECTION TIME!**

Collecting at **GBM 8!**

Amazing **SHPOINTS**  
opportunity!

SHPE UF ★ 2026  
the **SHPE JR**  
conference

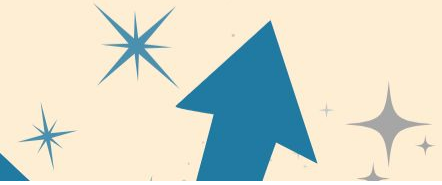
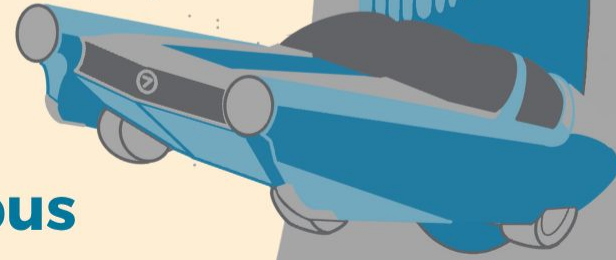


***CALLING ALL VOLUNTEERS!***

**January 15-16 2026**

**Time: Varies**

**Location: SHPE UF Campus**



# SHPE Jr Conference 2026

Come volunteer through our SHPE Jr program at the SHPE Jr Conference where you can get to meet our students, help our team, and showcase our SHPE UF Familia!

**Great SHPoints opportunity to kick of your Spring semester!!!**

**Date:** Thursday January 15th and Friday, January 16th

**Location:** Varies



**Volunteer Sheet!**



# MENTOR APPLICATIONS RELEASE



**MENTOR APPS  
OPEN: WEDNESDAY, NOVEMBER 19TH  
CLOSE: SUNDAY, JANUARY 25TH @ 11:59 PM**

**THEME TBA!**



University of  
Florida



# MERCH DISTRIBUTION

PICK UP @ HANGOUTS

DECEMBER 4 & 5TH

10:00 - 4:00 PM





# Theme SHPark Interest Form

**To gauge interest in a Theme SHPark Busch  
Gardens event to take place in the Spring  
2026 semester.**



**DEADLINE TO COMPLETE:  
SAT. DEC 6<sup>TH</sup> @11:59PM**



**MEMBER AND ROOKIE OF GBM**

# Member of the GBM

Jacob Seguinot

- Major: Civil Engineering
- Year: 3rd Year
- Origin: Puerto Rico
- SHPE Involvement:
  - Equipando Padres Director
  - SHPE Jr. Rep. NCF HS
  - MentorSHPE Jr. Mentor
- Aspirations:
  - Bringing communities together through land development while inspiring young students to achieve their dreams and make them realities!
- Fun Fact:
  - I'm a black belt in karate!



# Rookie of the GBM

Maryanne Anderson Lee

- Major: Mechanical Engineering
- Year: 3rd
- Origin: Nicaragua & Jamaica
- SHPE Involvement:
  - FA25 Outreach Director
  - SHPE Jr. Jr. Volunteer
  - MentorSHPE Jr. Mentor
- Aspirations:
  - For SHPE I would love to get more involved, meet more people, & continue helping kids break into the STEM field. For my career I would love to find a job in the biomechanics or sports engineering field so I can combine my love for sports, engineering, & medicine.
- Fun Fact:
  - I once sprained my left wrist, right wrist, and right ankle all at the same time during a flag football game!





# TEAM OF THE GBM

# Team of the GBM

Congratulations to our APPAREL TEAM!



**Apparel Directors:** Daniella Ronda, Miranda Arias, & Elizabeth Schnabel

**Lead Graphic Design Director:** Anthony Ramos



**MEMBERS OF THE SEMESTER**

# SECRETARY CABINET M.O.T.S

## Ema Longoria

- Major: Civil Engineering
- Year: 2nd
- Origin: Cuba & Ecuador
- SHPE Involvement:
  - FA25 Cabinet Liaison
  - FA25 & SP25 Photography Director
  - SU25 NMWW Committee
  - SP25 FYLP Participant
  - SHPE Jr. Conference 2025 Volunteer
  - MentorSHPE Mentee



# CORPORATE CABINET M.O.T.S

## Iulia Bianchi

- Major: Industrial & Systems Engineering
- Year: 2nd Year
- Origin: Venezuela
- SHPE Involvement:
  - 25-26 Corporate Liaison
  - FA25 Lead Info-Session Director
  - 24-25 GFT Corporate Director
  - 24-25 Robot Goalkeeper Design Team Project Manager
  - FLYP Class of Fall 2024



# MARKETING CABINET M.O.T.S

## Laura Prieto

- Major: Industrial & Systems Engineering
- Year: 2nd Year
- Origin: Colombia
- SHPE Involvement:
  - 25-25 Lead GFT Director
  - 25-26 Lead Social Media Director
  - SU25 Content Director
  - 24-25 GFT Marketing Director
  - 24-25 MentorSHPE Mentee
  - FYLP Fall 2024



# INTERNAL CABINET M.O.T.S

## Angelina Lopez

- Major: Biomedical Engineering
- Year: 3rd Year
- Origin: Cuba/Spain
- SHPE Involvement:
  - 25-26 Lead Engagement Director
  - SU25 Event Director
  - SP 25 SHPE UF Presidential Scholarship Recipient
  - 24-25 Photography Director



# TECH CABINET M.O.T.S

## Anthony Zurita

- Major: Computer Science
- Year: 4th year
- Origin: Ecuador
- SHPE Involvement:
  - 25-26 Technical Development Lead
  - 23-25 Android Mobile App Development Lead
  - F25 SHPE Capital Analyst



# EXTERNAL CABINET M.O.T.S

## JUAN YARALA

- Major: Civil Engineering
- Minor: Electrical Engineering
- Year: 2nd Year
- Origin: Colombia
- SHPE Involvement:
  - 25-26 SHPE Jr. Chair
  - 24-25 New Chapter Dev. Director
  - S25 MentorSHPE Jr Mentor
  - 24-25 Robot GK Design Team
  - 24-25 MentorSHPE Mentee
  - FYLP Fall 2024



# RESEARCH CABINET M.O.T.S

## Jonathan Orfelinda Cooper

- Major: Biomedical Engineering
- Year: 3rd Year
- Origin: Miami, Fl
- SHPE Involvement:
  - Research Pathways Director FA2025
    - Led Research101 Series
    - Creator of Designathon



# TREASURY CABINET M.O.T.S

## Henry Reyes-Perez

- Major: Mechanical Engineering
- Year: 2nd Year
- Origin: El Salvador
- SHPE Involvement:
  - PartnerSHPE Liaison
  - GBM Director
  - MentorSHPE Mentor & Jr Mentor
  - SP25 FYLP





# EVENTS

FALL 25 SENIOR



GRAD PHOTOS

Thursday, December 4th  
4:00 PM  
Gator Walk



University of  
Florida



# PROM

UNA NOCHE DE SALSA

Thursday, December 4th





# BBQ with Industry

**MONDAY, FEBRUARY 2ND**

**10:00 AM - 3:30 PM**

**LOCATION: FINE ARTS COURTYARD**



**SHPE**  
Leading Hispanics in STEM

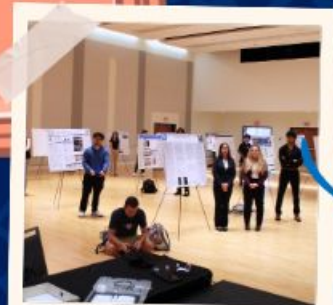
University of  
Florida

# ENGINEERING RESEARCH SYMPOSIUM



**APRIL 1<sup>ST</sup>, 2026**

J. Wayne Reitz Union  
Rion Ballroom  
April 1<sup>st</sup>, 2026  
12:00 PM



**ERS 2025**



# F25 End of Semester Survey





# GBM 8 RAFFLE

# HERE FOR YOU!

A group of young men are gathered outdoors on a grassy field. They are all smiling and have green paint or face paint on their faces and arms. Several of them have their fists raised in a celebratory gesture. They are wearing various casual clothing, including t-shirts and a baseball cap. The background shows trees and a clear sky.

**We are here for any questions or concerns you may have!**

# CONNECT WITH US



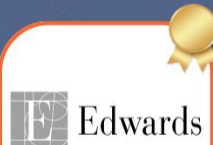
Find all the links  
from tonight here!



# December

SUNDAY	MONDAY	TUESDAY	WEDNESDAY	THURSDAY	FRIDAY	SATURDAY
30	1 Dog SHPtoys Volunteering	2 Idylwild STEM Volunteering SHPE FC Indoor Quarterfinals	3 <b>SHPE GBM #8</b>	4 No School - Reading Day SHPRM	5 No School - Reading Day	6
7	8	9	10	11	12 LAST DAY OF FINALS	13
14	15 WINTER BREAK STARTS	16	17	18	19	20
21	22	23	24	25	26	27
28	29	30	31			

# THANK YOU TO OUR PARTNERS!

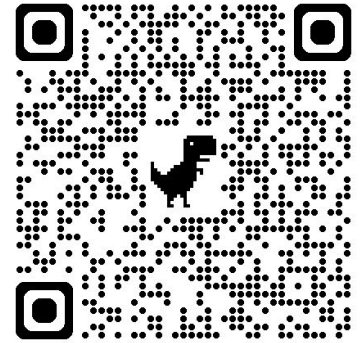


**Pero WAIT!**

# SHPE FC Semi-Final Match!

**TONIGHT 6:40 PM @ SOUTHWEST REC**

- Join us to support our indoor soccer team!
- Attend the Game -> Get a SHPOINT!
- No ride? No problem!!!



**Carpool Sheet!**