



EVENT CODE: STARTOFSHPRING

Go to shpeuf.com or use the **SHPE UF Mobile App**
Go to Points Program → Redeem Code



GENERAL BODY MEETING #1

Society of Hispanic Professional Engineers
January 21st, 2026



GUEST SPEAKERS



**ENGINEERING
AMBASSADORS**

**Apply to Engineering
Ambassadors!**

Scan QR Code for Our LinkTree!



@ufengineeringambassadors



ENGINEERING
AMBASSADORS

Solid Waste Infrastructure for Recycling (SWIFR) Grant Paid Research Opportunity

Students needed to conduct Waste Composition Studies in Marion County
(Feb 9th-13th)



- **Opportunity** for solid waste field research experience
 - Resume builder
- **Pay:** \$15/hr research position.
 - Able to assist with sorting activities



AGENDA



What is SHPE?



Meet the Team



Announcements



Upcoming Events



WHAT IS SHPE?

SOCIETY OF HISPANIC PROFESSIONAL ENGINEERS

Mission:

- SHPE changes lives by empowering the Hispanic community to realize its fullest potential and to impact the world through STEM awareness, access, support and development.

Vision:

- SHPE's vision is a world where Hispanics are highly valued and influential as the leading innovators, scientists, mathematicians and engineers

EVERYTHING ORGANIZATION

- Professionalism
- Familia Community
- Leadership Opportunities
- First Year Development
- Graduate & Research Resources
- Technical Experience
- K-12 Outreach
- Academic Resources
- Financial Literacy



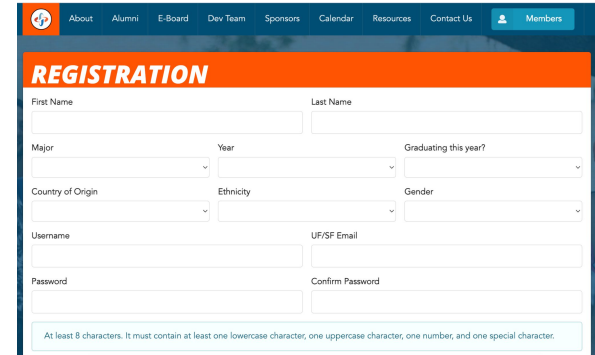
MEMBERSHIP

SHPE UF Membership:

- Visit shpeuf.com
- Free to sign up and make a profile
- Access to points program and internal resources

SHPE National Membership:

- Visit shpeconnect.org
- \$10 Undergraduate Membership fee
- You must be a national member to:
 - Apply for director positions & programs
 - Attend National Convention
- Access to SHPE National scholarships and resources



The screenshot shows a web registration form titled "REGISTRATION". The form includes fields for First Name, Last Name, Major, Year, Graduating this year?, Country of Origin, Ethnicity, Gender, Username, UF/SF Email, Password, and Confirm Password. A note at the bottom states: "At least 8 characters. It must contain at least one lowercase character, one uppercase character, one number, and one special character."



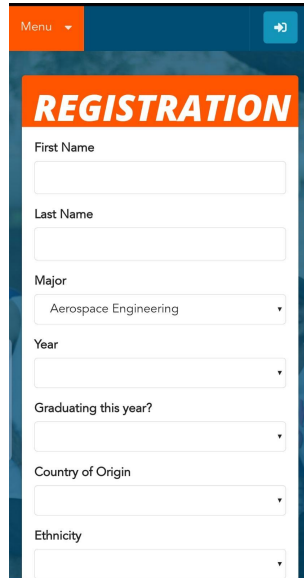
The screenshot shows the SHPE National "Sign In or Create an Account" page. It features the SHPE logo and the tagline "Leading Hispanics in STEM". The page has two main sections: "Not a Registered User Yet?" and "Login". The "Not a Registered User Yet?" section includes a "Go" button and a note: "If you are a visitor and do not already have a username and login, please enter your email below." The "Login" section includes fields for "Email Address" and "Password", a "Remember Me" checkbox, a "Forgot Your Password?" link, and a "Login" button.

SHPEUF.COM



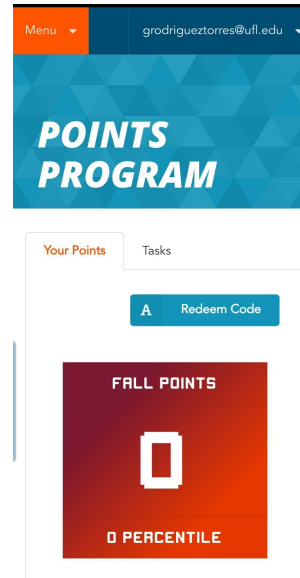
1

Homepage



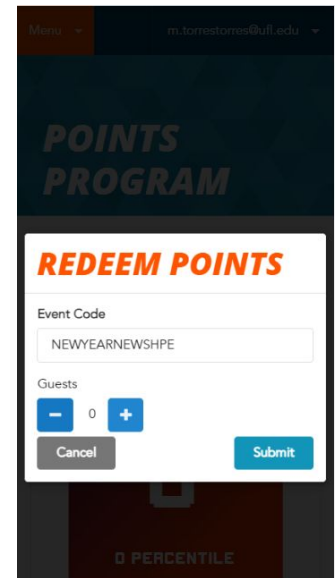
2

Registration



3

Points Rewards



4

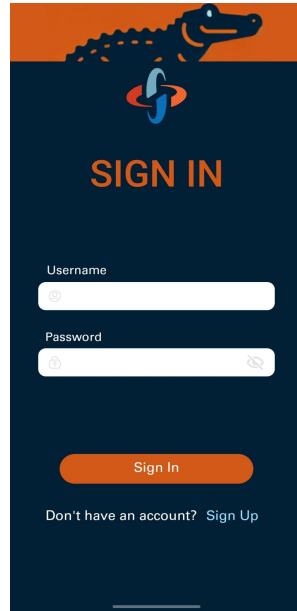
Enter Code

MOBILE APP



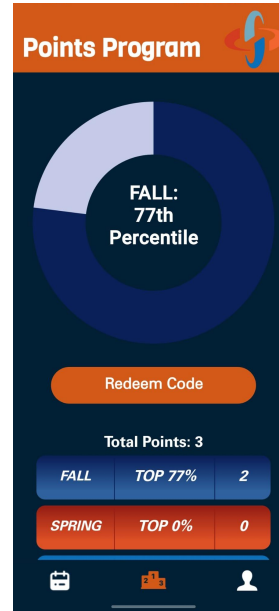
1

Homepage



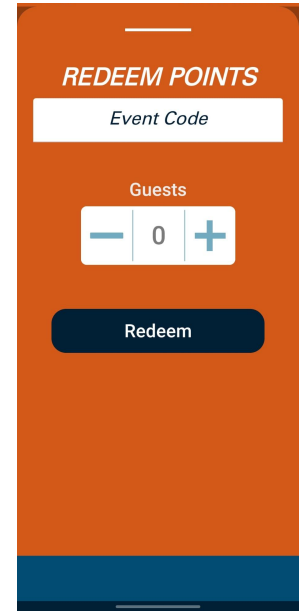
2

Registration



3

Points Rewards



4

Enter Code

DOWNLOAD THE SHPE APP OUT NOW!

- KEEP UP TO DATE WITH EVENTS
- INPUT YOUR CODES FOR SHPOINTS QUICKLY
- MORE FEATURES!



ANDROID APP



IOS APP



STAY UP TO DATE

Google Calendar

- Includes all SHPE UF events and can be easily added to your own Google Calendar
- Each event will include all necessary information for you to be in the know

Instagram

- @shpeuf
- Weekly posts with all info for the week


WhatsApp Community


- Reminders, quick announcements, updates, and all SHPE-related chats

■ Fall GBM 1

Thursday, August 29 · 6:15 – 7:30pm

 [Invite via link](#)

 TUR L007

 **In-Person Location:** Turlington Hall L007
Zoom Link: <https://ufl.zoom.us/j/99836320537>

 30 minutes before

 SHPE UF Master Calendar




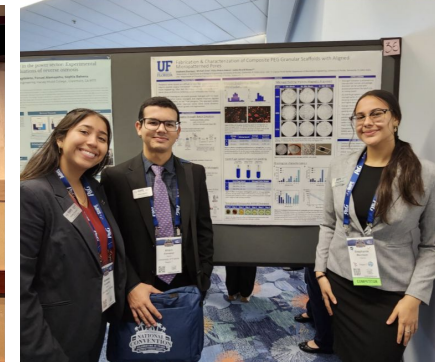


MEET THE TEAM

VP RESEARCH

Stephanie Manrique (she/her)

- Major: Biosystems Engineering
- Year: 4th Year
- Origin: Bogotá, Colombia 
- SHPE Experience
 - FA23 MentorSHPE Mentee
 - SP24 Graduate Outreach Director
 - SU24 Event Director
 - 23-24 Research Team Chair
 - SP25 MentorSHPE Mentor
- Professional Experience
 - Pharmacodynamics Research Assistant at UF
 - Chemical Engineering Research Assistant at UF
 - Biomedical Engineering Research Assistant at UF
 - Pre-Market Quality Engineer Intern @Medtronic
- Fun Fact:
 - I am a world class indoor percussion performer and a published research author



SECRETARY

Andrea Avila (she/her)

- Major: Industrial & Systems Engineering
- Year: 3rd Year
- Origin: Caracas, Venezuela 
- SHPE Experience
 - SP25 SHPEducation Director
 - FA24 Apparel Director
 - FA24-25 Alumni Director
 - SU24 Content Director
 - SP24 Mentee
 - FYLP Class of Spring 2024
- Professional Experience
 - STANDOUT Participant @ P&G
 - SU26 P&G Supply Chain Intern
- Fun Fact:
 - I danced flamenco for 9 years



TREASURER

Carolina Abad (she/her)

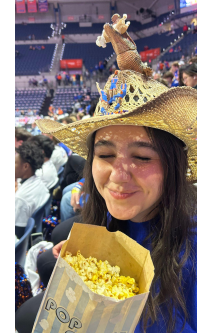
- Major: Computer Science
- Year: 3rd year
- Origin: Las Palmas de Gran Canaria, España 
- SHPE Experience
 - FA24-25 FinanceSHPE Director
 - FA24-25 Yearbook Director
 - FA24-25 SHPE Jr. P.K.Y Representative
 - SU24 Recruitment Director
 - SP24 SHPEducation Director
 - FYLP Class of Spring 2024
- Professional Experience
 - Consulting Summer Analyst @ Accenture
 - Software Engineering Intern @ Lockheed Martin Aeronautics
 - Investment Analyst Intern @ PS27 Ventures
 - Venture Capital Extern @ TampaBay.Ventures
 - Cybersecurity Intern @ Catenactio
- Fun Fact:
 - I'm a double black belt in Karate and Brazilian Jui-Jitsu!



VP MARKETING

Tatiana Escobar (she/her)

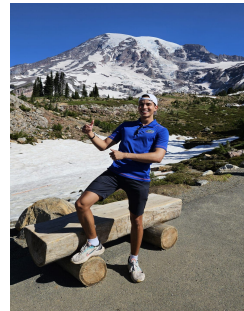
- Major: Civil Engineering
- Year: 4th Year
- Origin: Miami, Florida | Cuba 
- SHPE Experience
 - SP25 FYLP Director
 - FA24 Apparel Director
 - 24-25 SHPEducation Civil Engineering Advisor
 - SU24 Recruitment Director
 - SP24 Social Media Director
 - FA23 Apparel Director
 - SU23 Graphic Design Director
 - MentorSHPE Mentor x3
 - FYLP Class of Fall 2022
- Professional Experience
 - Project Engineer Intern @ Turner
 - Field Engineer Intern @ Turner
- Fun Fact:
 - I am a Raww SUPER FAN & I have about 50 vinyls in my record collection



VP CORPORATE

Diego Rey (he/him)

- Major: Structural Eng. (M.E)/ Civil Eng. (B.S) F 2024
- Year: Master's Student
- Origin: Barranquilla, Colombia 
- SHPE Experience
 - SP25 Corporate Liaison
 - 24-25 Lead BBQ with Industry Director
 - FA 22 Apparel Director
 - 23-24 SHPEducation Civil Engineering Advisor
 - FYLP Class of Spring 2022
 - Mentor/ Mentee
- Professional Experience
 - E.I certified
 - Bridges, Structures & Offshore Intern @ Arup
 - Structural Engineering Intern @ H&H
 - Structural Engineering Staff @ GSE
 - Lab Technician @ GSE
- Fun Fact:
 - My spotify wrapped reached over 100k minutes



VP TECHNOLOGY

Jorge Ramirez (he/him)

- Major: Computer Engineering
- Year: 4th Year
- Origin: Ciego de Avila, Cuba 
- SHPE Experience
 - 24-25 Technology Lead
 - 23-24 Software Engineering Director
 - SHPEducation Tutor & CpE Advisor
 - MentorSHPE Mentor x4
 - FLYP Class of Spring 2023
 - Summer 2023 Recruitment Director
- Professional Experience
 - Summer 2026 Relativity Space Robotics SWE Intern
 - Summer 2025 Lockheed Martin Intern
 - Summer 2024 Northrop Grumman Intern
 - Microprocessors Applications Teaching Assistant
- Fun Fact:
 - I recently got back into playing the Yu-Gi-Oh TCG



VP EXTERNAL

Vivian Rincon Dib (she/her)

- Major: Computer Science
- Year: 3rd Year
- Origin: Maracaibo, Venezuela 
- SHPE Experience
 - SP25 Lead Community Outreach Director
 - SP25 MentorSHPE Mentor
 - SP23 - SP25 iOS App Director
 - FA24 Lead Content Director
 - SP24 GFT Marketing Director
 - FYLP Class of Fall 2024
- Professional Experience
 - Systems R&D SWE Intern @ NI/Emerson
 - SWE Intern @ FCI
 - SWE Intern @ Docures
- Fun Fact:
 - I was a ball kid for 2 tennis championships in Abu Dhabi!



VP INTERNAL


Grace Ramirez (she/her)

- Major: Mechanical Engineering
- Year: 3rd year
- Origin: Miami, FL | Cuba & Colombia  
- SHPE Experience
 - SP25 GFT Lead Director
 - SP25 FYLP Director
 - SP25 MentorSHPE Mentor
 - FA24 Lead Event Director
 - SP24 GFT Event Director
 - 23-24 Yearbook Director
 - FA23 FYLP Class
- Professional Experience
 - Manufacturing Engineering Intern @P&G
- Fun Fact:
 - I have been to Disney more times than I have been on a plane!



PRESIDENT

Sebastian Sobrino (he/him)

- Major: Mechanical Engineering
- Year: 4th year
- Origin: Gurabo, Puerto Rico 
- SHPE Experience
 - 24-25 VP External
 - SP24 GFT Lead
 - SP24 and SP25 XEC Winner
 - FA23 MentorSHPE Director
 - SP23 GFT Corporate Director
 - FYLP Class of Fall 2022
- Professional Experience
 - Manufacturing Engineering Intern @ P&G
 - 2x Product Engineering Intern @ John Deere
 - Manufacturing Engineering Intern @ Caterpillar
 - Engineering Intern @ J.O.G. Engineering
- Fun Fact:
 - I visited 8 national parks and hiked 124 miles this summer!





ANNOUNCEMENTS

DIRECTORS

INFORMATION

- Open to all years
- No previous experience is required for these roles
- You can apply to multiple positions, we will ensure you do not get overloaded
- Apps are due on *Tuesday January 27th* at 11:59 PM!

Important Save The Date:

LeaderSHPE Workshop

When: Sunday, February 1st

Time: 11:00 AM – 2:00 PM

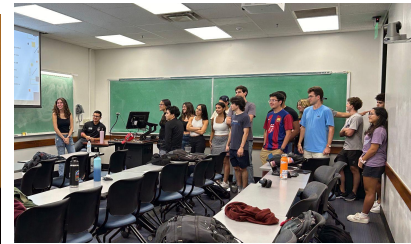
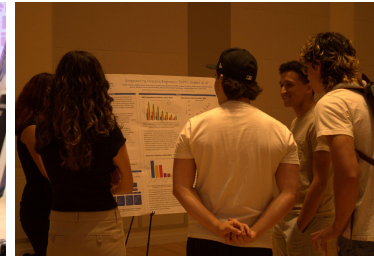
Location: Reitz Union

Attendance is **MANDATORY** for all accepted directors!

RESEARCH

Director Positions Available...

- Journal Club Team Chair
- Research Pathways Director
- Graduate Pathways Director
- Director of Research Lab Experiences
- Director of Data Analysis & Insights
- Director of Graduate Outreach
- Designathon Event Director (1-2)
- Graduate Liaison (1+)



SECRETARY

Director Positions Available...

- SHPEducation Director (2)
- SHPEducation Tutor
- Alumni Relations Director (2-3)



TREASURY

Director Positions Available...

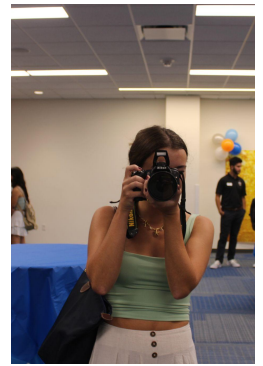
- GBM Director (1)
- Scholarship Opportunity Director (2)



MARKETING

Director Positions Available...

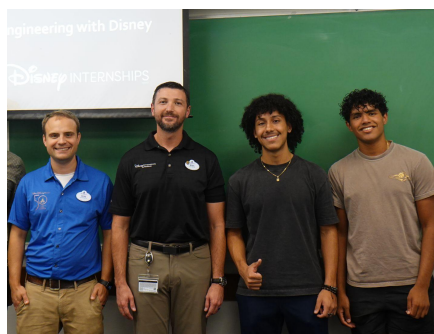
- Social Media Director (3)
- Apparel Director (1-2)
- Graphic Design Director (2-3)
- Content Director (3)
- Photography Director (2)



CORPORATE

Director Positions Available...

- Project Manager (3)
- Info-Session Director (2)



EXTERNAL

Director Positions Available...

- Lead Community Outreach Director (1)
- Community Outreach Director (3)
- SHPE Jr. Jr. Director (1)



INTERNAL

Director Positions Available...

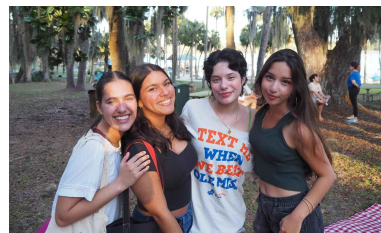
- SHPEtina Ambassador (3)
- Event Director (3)
- Athletics Director (4)



TECHNOLOGY

Director Positions Available...

- Software Developer Director (3-4)
- Senior Software Engineering Director (1-2)
- IOS Mobile App Developer Director (3-4)
- Android Mobile App Developer Director (3-4)
- UI/UX director (1-2)
- SHPEWorks Director (1-2)





**Want a *FREE* Trip to
New York City?
...and are you interested in tech,
trading, and research?**

JANE STREET'S FTTP

Jane street is hosting the First-year Trading and Technology Program! (FTTP) , this is a great opportunity for first-year students to gain insight into a career in tech, trading and research.

Who: First-year undergraduate students

When: Evening March 23 - Morning March 27, 2026

Deadline to apply: Sunday, February 1st, 2026 at 11:59pm ET All applicants will receive an update on their application on Friday, February 13th, regardless of when you submitted your application.

"Jane Street will cover **all** travel expenses to and from NYC, including housing and meals."



SHPE UF Presents

CODE FOR CHANGE HACKATHON

February 7th @ 11:30 AM - February 8th @ 3 PM
Newell Hall

Code for Change is dedicated to building innovative solutions to benefit the Gainesville and Greater Alachua County community!

Registration Due Date: Tuesday, January 27 @ 11:59pm



Volunteer & Mentor Sign-Up Sheets

We need **MANY** volunteers for tasks such as set-up, clean-up, checking in attendees, and distributing food!

Great SHPoints opportunity!



Volunteers

Sign up as a mentor to provide guidance and support to hackers and answer their questions!

Great SHPoints opportunity!



Mentors



Ideathon Workshop with WiNGHacks

In collaboration with WiNGHacks, we are co-hosting a workshop to teach hackers how to come up with and validate a hackathon idea, create wireframes, and pitch their project!

Location: TBD

Time: 6pm - 7:30pm

Date: Monday, February 2nd



Follow our IG!



@shpe.code4change

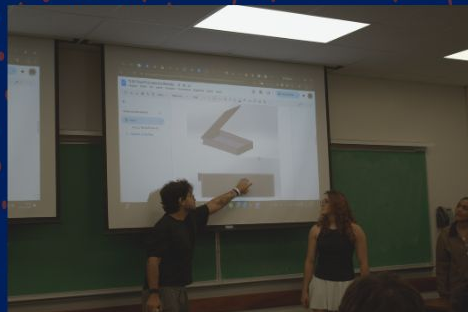
Thank you to our sponsors!

BANK OF AMERICA 

Florida
Community
Innovation



Technology Leadership & Development Program



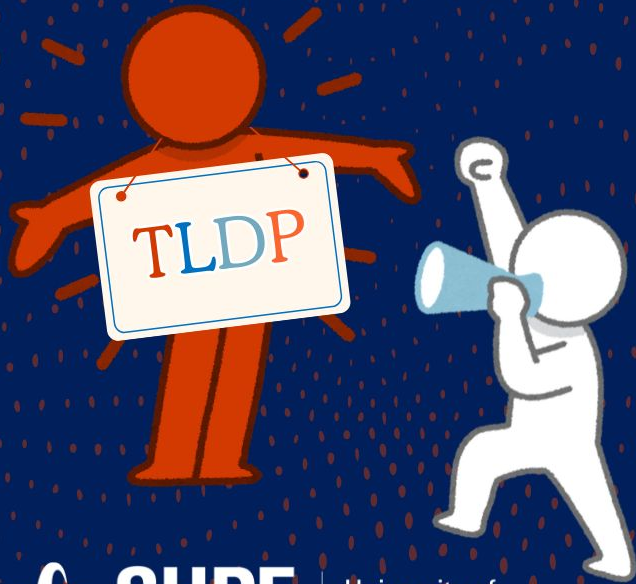
What is it?

- Explore various tech fields
- Build a resume ready project
- Connect with the tech community

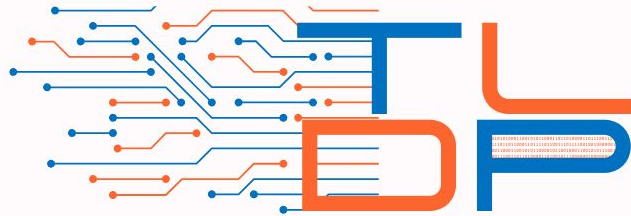
What do you need to apply?

- Basic knowledge of programming
- 1 or 2 programming courses

Technology Leadership & Development Program



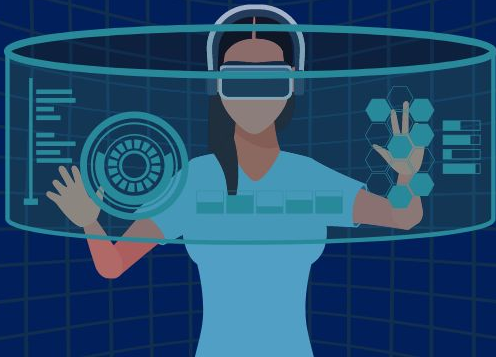
Applications due January 27th!





JOIN THE TECH CABINET DISCORD!

Scan the QR code in the
next slide to join



TECH CABINET DISCORD

- The hub for all Tech Cabinet information like...
 - Design Teams
 - Code for Change
 - General questions
 - Event reminders
 - Tech community socials
 - & more!



Scan to Join!

SHPE HANGOUTS

ARE BACK!

**Study with fellow
SHPEitos, hangout,
and enjoy time in
between class!**



SHPE HANGOUTS

Join us in Marston Basement to hang out, study, or take a break with your fellow SHPEitos!

- Hangouts will be every weekday from 8 AM - 6 PM
- Schedule for the week will be posted every Monday morning on our Instagram!



SHPE Hangouts

MONDAY L118 8:00 AM - 6:00 PM	TUESDAY L118 8:00 AM - 6:00 PM
WEDNESDAY L118 8:00 AM - 6:00 PM	THURSDAY L118 8:00 AM - 6:00 PM
FRIDAY L118 8:00 AM - 6:00 PM	Marston Basement <i>Hangout with SHPEitos while doing school work!</i>

The graphic is a dark blue rectangular box with a white border. At the top, the text 'SHPE Hangouts' is written in a white, italicized, sans-serif font. Below this, the schedule is organized into a grid. The days of the week are listed in white text on orange rectangular backgrounds. Under each day, the room number 'L118' and the time '8:00 AM - 6:00 PM' are displayed in red text. The Friday slot is empty, and the bottom right corner contains a white location pin icon followed by the text 'Marston Basement' in white, and 'Hangout with SHPEitos while doing school work!' in white italicized font.

SHPE EDUCATION

- Programs that guides members through the struggles of engineering by offering:
 - Major-based Group Chats
 - Experienced Peer Advisors
 - Major Survival Guides
 - FREE In-Person & Virtual Tutoring
 - Exam Reviews/Study Sessions
 - De-stressing Events

Tutee Interest Form:



Welcome Drive:



SHPE ADVISING GROUP CHATS



Join our major group chats to ask questions, meet your advisor(s), and learn about your major

SHPE ADVISOR GROUP CHATS



Biomedical



Chemical



Civil



Electrical



Environmental



Industrial



Materials



Mechanical/
Aerospace



Nuclear



Comp Sci, Comp
Engineering, DAS



JOURNAL CLUB

Applications

NOW OPEN!

Want to develop your research, presentation, and leadership skills? Join SHPE UF's Journal club. Gain experience discussing literature with fellow researchers. Apply now!

Applications Open: January 21st

Applications Close: January 26th, 11:59 PM



BANK

SHPE CAPITAL

**Applications
NOW OPEN!**

Until January 26th @ 11:59 pm



Calling ALL talented CAD designers!

Your task:

Create a 3D trophy design for the Engineering Research Symposium by the second GBM of Spring 2026 for a chance to win a prize!



TROPHY CAD DESIGN CONTEST



University of
Florida



New Member Success

Working to retain and ensure that new members are established with SHPE UF programs and opportunities.

MEET THE TEAM



**Christian Pagazani
Salazar**

Industrial and Systems
Engineering Major
Class of 2028

☎ 407-883-9308



Thomas Neuberger

Industrial and Systems
Engineering Major
Class of 2028

☎ 954-292-0833



Stephen Crowe

Mechanical
Engineering Major
Class of 2028

☎ 305-615-9738

FYLP



Applications Open!

Applications Open:
January 21st

Applications Close:
January 26th at 11:59 PM



FYLP

Interested in **SHPE's First Year Leadership Program?**

FYLP is a program that aims to help 1st year students get acclimated to UF while also providing them the necessary tools to become a successful leader. All this via:

- Leadership development workshops
- Providing info on SHPE & UF resources
- Displaying how to get involved on campus
- Socials + Mentoring

Due: January 26th at 11:59pm



MentorSHPE Mentor Applications

Want to help mentor a SHPEito?



Apply now to become a

Mentor

Calling all the
mentors!



MENTORSHPE

What is MentorSHPE?

MentorSHPE is a program where **mentees** are matched with a **mentor** that can offer advice in professional, academic, or even daily-life aspects! It is a great way to get involved and form new friendships!

Important Dates

- Mentor Apps Open: Now!
- Mentor Apps Due: January 26th @11:59PM
- Mentee Apps Open: January 29th
- Matchmaking Event: February 3rd @7:30PM
- Mentee Apps Due: February 5th @11:59PM
- MentorSHPE Reveal Night: February 10th @6PM



SeniorSHPE Trip

March 6th - 8th | Miramar Beach, FL

Final Payment Due!



**Friday, February 6th
11:59 PM**



University of
Florida

SHPE UF Presents.....



Theme SHPark

Saturday, February 28th

Busch
Gardens
TAMPA BAY

 **SHPE**
Leading Hispanics in STEM

University of
Florida

Theme SHPark

Join us by spending a day at Busch Gardens!

Secure your spot by submitting the payment form, and carpooling will also be available!

Date: February 28th

Amount: \$70 (admission ONLY)

Payment Due: February 4th @11:59 PM

This is a group price rate, and virtual admission tickets will be sent after processing

Payment Form:



Carpool Form:





SHPEtinas

T-Shirt

Interest Form

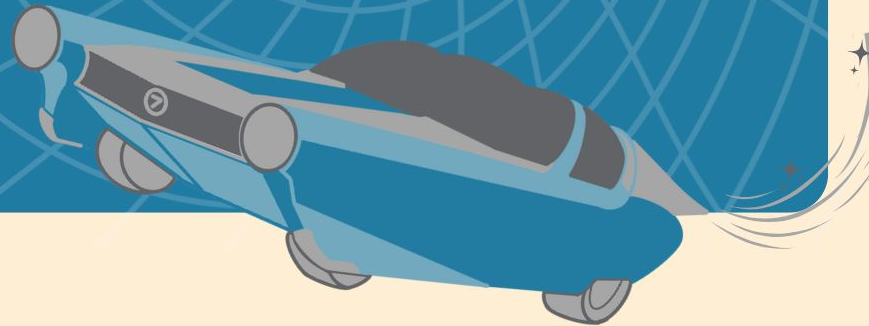


University of
Florida

MentorSHPE Jr Mentor Applications



If you are interested in mentoring our SHPE Jr. high school students, scan this QR code!
Applications are due **Wednesday, January 28th at 11:59 PM.**





**GFT 2026
IS BACK!!**

GOALS FOR TOMORROW

- SHPE UF's biggest event of the year hosted by 3 scholarship-winning freshmen!
- Our event raises \$1000 for each scholarship recipient.
- Join us for games, raffles, food, and more!
- Prizes will be awarded throughout the day of the event and the winning team wins a big cash prize!
- **When:** March 28th @ Flavet Field



GFT DIRECTORS



Name: [Dianelys Suarez](#)
Position: [Event Director](#)
Major: [Electrical Engineering](#)



Name: [Angelina Ramos](#)
[Hanciuta](#)
Position: [Marketing Director](#)
Major: [Mechanical Engineering](#)



Name: [Derek Rodriguez](#)
Position: [Corporate Director](#)
Major: [Chemical Engineering](#)

THEME REVEAL!







**LET THE
GAMES
BEGIN...**

GFT SIGN UPS

****Check “GFT TEAMS” sheet to ensure availability****

1. Sign up in blocks of **4** people into your desired team.
 - a. Pick either **Guards** or **Players**, and then your role within it (Ex. Guards: Watchmen or Players: Thrill).
2. Your team for most of GFT will be all the blocks under the one you choose.
3. The winning team will then be split into the respective blocks.
4. A tie-breaker between the blocks will decide which group gets the cash prize (\$240)

SIGN-UP FORM



Venmo \$5 to @SHPE_UF

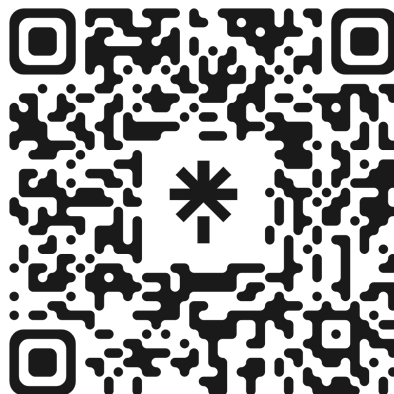
****First full team of 4 to sign up gets free raffle entry!****

GFT SOCIALS

Follow us on Instagram to stay up to date on event information and fun content: **@goalsfortomorrow2026**



WhatsApp Community



Linktree QR



Instagram QR

Want to look professional at career events? Purchase a SHPE UF Padfolio today!

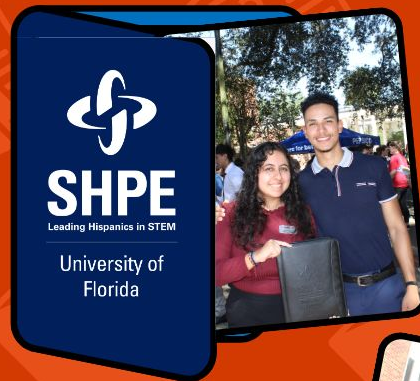
Deadline to submit form is January 25th at 11:59 PM.

**Use your padfolio
to take notes at
career fairs and
keep your
resumes crisp!**

**Distribution will take place
before BBQ w/ Industry!**

**Those interested in
purchasing need
to fill out the order
form and submit
proof of payment.**

Scan this code to submit an order form!



MERCH PICK UP!



WHERE IS TITO?



WHERE IS TITO?

Introducing our weekly segment: “Where is Tito?”

How it works:

- Tito will be hidden in our Instagram on our Weekly Post
- DM @shpeuf on what slide Tito is hidden
- The FIRST person to DM us will receive a FREE GBM Skip the Food Line Pass

Guidelines:

- There will be an opportunity EVERY Week!
- Each week there is only ONE attempt to guess
- The only Tito that qualifies is the Tito with the striped shirt

GBM 5 Winners!

- Daniel Fontes
- Luca Ordonez

THIS IS HIDDEN TITO



THIS IS NOT HIDDEN TITO



Level Up Your ExSHPErience with...

SHPoint Pass



10 SHPoints	20 SHPoints	30 SHPoints	40 SHPoints	50 SHPoints	60 SHPoints	70 SHPoints	80 SHPoints	90 SHPoints
Add a song to the SHPlaylist	2 MentorSHPE Individual Points	Skip the GBM Food Line Pass	Raffle Ticket for GFT	Assassin Revive OR SHPE Pin	Discount on Merch	SHPE Plushie	Invite to GALA	First 3 Members to Reach this Tier get FREE MERCH

SHPOINT PASS

Introducing SHPoint Pass!!

How it works:

- After you reach every tier you are able to collect the respective reward
- You can only collect the reward at the designated distribution time
- You are not able to collect any rewards twice
- This is a semesterly pass, therefore only spring shpoints can be used
- SHPoints are not removed once a reward is redeemed

Distribution:

Dates: Every Tuesday and Thursday

Time: 11AM - 1PM

Location: Hangouts



MEMBER AND ROOKIE OF GBM

Member of the GBM

Efren Lopez

- Major: Computer Science
- Year: Future PhD Candidate
- Origin: Mexico
- SHPE Involvement:
 - F23-SP24 Graduate Outreach
 - F25-SP26 Graduate Liaison
- Aspirations:
 - Get a PhD from UF and continue to support his SHPEitos along the way!
- Fun Fact:
 - He gave Suzanna (SHPE CEO) a creeper at the SHPE National Convention!



Rookie of the GBM

Jean Paolo Lobelo

- Major: Electrical Engineering
- Year: 1st Year
- Origin: Venezuela
- SHPE Involvement:
 - SP26 SHPoints Pass Director
 - SP26 BBQ with Industry Director
 - F25 Autonomous Vehicle Design Team
 - F25 MentorSHPE Mentee
 - F25 FYLP
- Aspirations:
 - To help SHPE in any way I can, meet every SHPEito, and form memories alongside them.
- Fun Fact:
 - I only applied to UF!





TEAM OF THE GBM

Team of the GBM

Congratulations to our SHPE Jr. Conference Team!



SHPE Jr. Conference Directors: Sofia Morales, Luca Ordonez, & Matthew Gutierrez
SHPE Jr. Conference Lead: Daniel Fontes



EVENTS



GFT

FUNDRAISER

WHEN

WED, JANUARY 21
8:00PM - 10:30 PM

WHERE

THE SWAMP
1104 SW 2nd Ave, Gainesville,
FL 32601



MENTION SHPE UF
AT REGISTER!!!

MEMBERS EARN SHPOINTS IF YOU *wink wink*
COME SUPPORT

CAFECITO CON SHPEITOS

Come have a Cafecito
&
Get to know your SHPEitos!

Thursday, January 22nd

9 AM - 12 PM

**Location: SHPE Hangouts
Marston Science Library L118**



Hacking the **HACKATHON**

W/



*Come prepare for
upcoming hackathons
incoming:*



swamp**hacks**



**Thursday, January 22nd
6:00 - 7:00 PM
Location: Little Hall 121**

JANUARY

23



NMS Welcome Mixer



6:00 PM



MAT 119

End the week strong and join us for our New Member Success Welcome Mixer to meet our NMS Team and new members.

SHPE Professional Headshots

Need a new picture for your LinkedIn profile, applications, or in preparation for UF Career Week/BBQ with Industry?



Schedule your appointment through this Google Sheet and be sure to arrive on time!

Saturday, January 24th

1:00 - 3:00 PM

Malachowsky Hall | Gator Walk | Wertheim Lab Building

Professionalism Bootcamp 101



Monday, January 26th



5:30-7:00 PM



Location: TURL 005



SHPE
Leading Hispanics in STEM

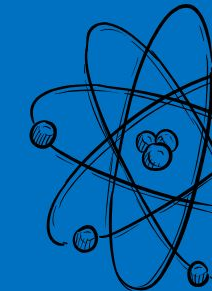
University of
Florida





H_2O

$\pi = 3.1415$



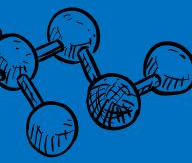
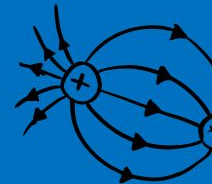
NCF

VOLUNTEERING

January 27th

10:50am-12:00pm

North Central Florida Public Charter School
1000 NE 16th Ave, Building C, Gainesville, FL 32601



$E=mc^2$



University of
Florida

Leading Hispanics in STEM

NCF Volunteering

Come volunteer through at North Central Florida Charter High School where you can help students discover their passion for STEM!

AMAZING SHPoints opportunity!!!

Date: Tuesday, January 27th

Time: 10:50am - 12pm

Location: 1000 NE 16th Ave, NCF Charter High School



Sign-Up & Carpool Form!

Build Your Resume With Turner

Tuesday, January 27th

5:30-7:00 PM

Location: MAT 119



WT INFO SESSION

WHITING-TURNER



Assemble your opportunities at Whiting-Turner

January 29th
5:00 - 6:00 PM
Location: MAT 119



University of
Florida

PICKLEBALL SOCIAL

JANUARY 29TH
7:30-9:30 PM
SW REC COURTS



SHPE
Leading Hispanics in STEM

University of
Florida

Senior SHPE



Sunrise

Friday, January 30th

6:30 AM - 8:30 AM

Depot Park



..... SPRING

BBQ with 
Industry



Monday February 2nd, 2026
10:00 AM - 3:30 PM
Fine Arts Courtyard

ExxonMobil

accenture

BBQ WITH INDUSTRY

SHPE-UF's biggest recruiting event of the fall!

***You must be a national member to eat BBQ!**

- When: Monday, February 2nd
- Time: 10 AM - 3:30PM
- Where: Fine Arts Courtyard!

Volunteering



Scan to volunteer and
get SHPoints!

BBQ WITH INDUSTRY

SHPE-UF's biggest recruiting event of the fall!
Research the companies that will attend!

Society of Hispanic Professional Engineers


Spring 2026

Welcome to SHPE UF's

BBQ with Industry

Defining the Future of Connections.

Monday, February 2nd
10:00 AM - 3:30 PM
UF Fine Arts Courtyard

 **SHPE** University of Florida
Leading Hispanics in STEM



Society of Hispanic Professional Engineers

BBQ with Industry Map



Company Key

- KIM - Kimpton
- PH - Pivotal
- BOA - Bank of America
- EXX - ExxonMobil
- L3A - L3Harris
- BLO - Bloomberg
- RSH - RSH

Majors Hiring Key

- Civil Engineering
- Environmental Engineering
- Mechanical/Aerospace Engineering
- Electrical Engineering
- Biomedical Engineering
- Chemical Engineering
- Software Engineering
- Computer Engineering
- Computer Science
- Industrial Engineering
- Software Engineering

 **SHPE** University of Florida | Page 12
Leading Hispanics in STEM



TEXAS INSTRUMENTS

INFO-SESSION

Tuesday, February 3rd

5:30 - 6:30PM

Location: MAT 0119



University of
Florida



MentorSHPE

Matchmaking Event

Join us for our MentorSHPE Matchmaking Event for the opportunity to meet your potential mentor!

**Tuesday,
February 3rd**

7:30 PM

Location: TBD



SHPE
Leading Hispanics in STEM

University of
Florida

**Bond with
mentors and
participate in
activities to find
your match!**



RESEARCH & GRAD 101 SPRING EDITION!

Curious about research? This SHPE workshop breaks down what research is, why it matters, and how undergraduates can get started at UF—plus how it connects to grad school!

**February 10th
5:00 - 6:00 PM
Location TBA**

Professionalism Bootcamp 102:

Interviewing and Networking



Thursday, February 12th



5:30-7:00 PM



Location: TURL 005



SHPE
Leading Hispanics in STEM

University of
Florida

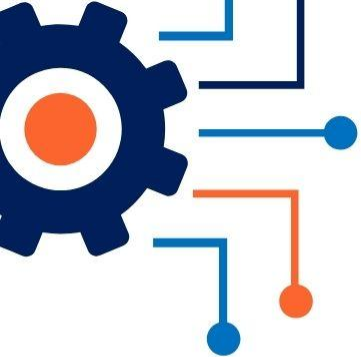


Bootcamp Office Hours

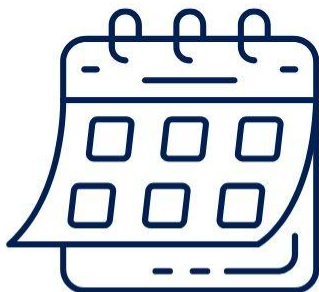
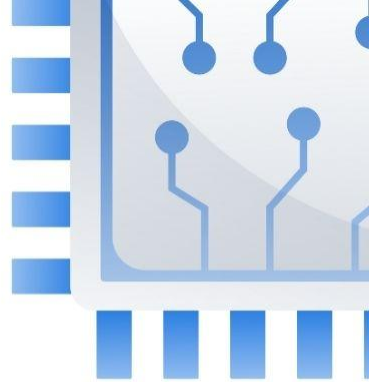


**Resume Review?
Elevator Pitches?
Come to Office Hours!**

**Tuesdays and Thursdays,
2:00-4:00 PM
@
SHPE Malachosky**

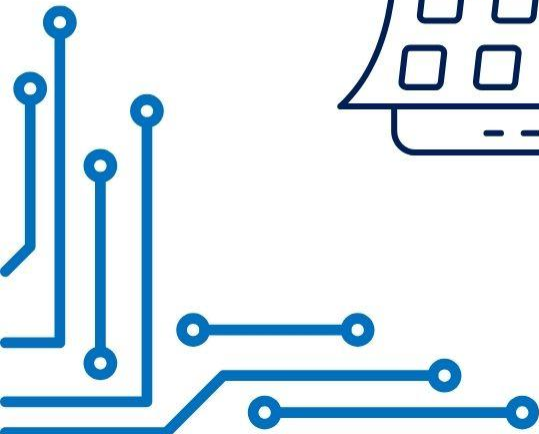


SHPE UF DESIGNATHON



SAVE THE DATE!

March 7th, 2026



SHPE UF DESIGNATHON

The SHPE UF Designathon is a collaborative, hands-on engineering challenge focused on creativity, teamwork, and innovation. **Due Sunday, February 22nd!**

Attendee Sign-up:



Volunteer Form:



Engineering Research Symposium

The Engineering Research Symposium is a campus-wide event where students present their research, attend workshops, and connect with peers and faculty.

Due: Wednesday, March 4th!

Abstract Submission Form:



Volunteer Form:



SHPE UF

FALL 2025 MEMBER SURVEY RECAP



**74% use IG
to stay
updated**

**More
promotion and
events for
NMS!**

**\$6,440 in
Convention
funding!**

**Favorite
social media:
REELS!**



**88%
prepared for
recruiting
season**



SHPE
Leading Hispanics in STEM

University of
Florida

**86% want more
community
outreach!**

**93%
performance
rated EBoard
and Chapter**

**Most
enjoyed?
FAMILIA!**

**Increase to 76
SHPEitos in
research**

**70% want to
join a Design
Team!**



University of
Florida

Spring 2026 Kickoff Survey



The background of the image features a repeating pattern of vertical lines in three colors: orange, light blue, and dark blue. These lines are scattered across the white background, creating a festive, rain-like effect. A solid dark blue horizontal band runs across the center of the image, containing the text.

GBM 1 RAFFLE

SPRING DIRECTOR APPLICATIONS

-  8 Cabinets
-  50+ Positions Available
-  Apply using the Linktree in our bio



DUE: Saturday, January 25th at 11:59 PM EST



HERE FOR YOU!

A group of young men are gathered outdoors on a grassy field. They are all smiling and have green paint or face paint on their faces and arms. Several of them have their fists raised in a celebratory gesture. They are wearing casual clothing, including t-shirts and a baseball cap. The background shows trees and a clear sky.

We are here for any questions or concerns you may have!

CONNECT WITH US



Find all the links
from tonight here!



January

MONDAY	TUESDAY	WEDNESDAY	THURSDAY	FRIDAY	SATURDAY	
28	29	30	31	1	2	3
4	5	6	7	8	9	10
11	12 First Day of Spring Semester	13	14	15 SHPE Jr. Conference	16 SHPE Jr. Conference	17
18	19 MLK Day - No School	20 New Member Info Session	21 SHPE GBM #1 FYLP, MentorSHPE, Journal Club, & Director Apps Open	22 Cafecito con SHPEitos Hacking the Hackathon with 53rd Bank	23 New Member Mixer	24 Professional Headshots
25	26 Bootcamp #1	27 SHPE Jr Volunteering at NCF Turner Info Session	29	30 Whiting - Turner Info Session	31	

THANK YOU TO OUR PARTNERS!

